

R. V. College of Engineering, Bengaluru – 560059 (Autonomous Institution Affiliated to VTU, Belagavi) FIRST SEMESTER CREDIT SCHEME FOR PHYSICS CYCLE								
COMMON TO ALL PROGRAMS								
Sl.No	Course Code	Course Title	BOS	CREDIT ALLOCATION				Total Credits
				Lecture	Tutorial	Practical	SS(EL)	
1	16MA11	Engineering Mathematics-I	Maths	3	1	0	1	5
2	16PH12	Engineering Physics (Theory and Practice)	Physics	4	0	1	0	5
3	16CV13	Elements of civil Engineering	CV	4	1	0	0	5
4	16ME14	Computer Aided Engineering Drawing (Theory and Practice)	ME	1	0	2	0	3
5	16EE15	Elements of Electrical Engineering	EE	4	0	0	1	5
6	16HSC16	Constitution of India and Legal Studies for Engineers	HSS	2	0	0	0	2
7	16HSK17*	Kannada*	HSS	1	0	0	0	0
		Total No. of Credits						25
		No. Of Hrs.		19	04	6	8**	29

*Mandatory Audit course 1 Hr per week ** Non contact hours

R. V. College of Engineering, Bengaluru – 560059
(Autonomous Institution Affiliated to VTU, Belagavi)
FIRST SEMESTER CREDIT SCHEME FOR CHEMISTRY CYCLE

COMMON TO ALL PROGRAMS

Sl.No	Course Code	Course Title	BOS	CREDIT ALLOCATION				Total Credits
				Lecture	Tutorial	Practical	SS(EL)	
1	16MA11	Engineering Mathematics-I	Maths	3	1	0	1	5
2	16CH12	Engineering Chemistry (Theory and Practice)	Chemistry	4	0	1	0	5
3	16CS13	Programming in C (Theory and Practice)	CSE	4	0	1	0	5
4	16EC14	Basics of Electronic Engineering	ECE	4	0	0	1	5
5	16ME15	Basics of Mechanical Engineering (Theory and Practice)	ME	4	0	1	0	5
6	16HSE16*	Professional Practice-I (Communication Skills)	HSS	2	0	0	0	0
		Total No. of Credits						25
		No. Of Hrs.		21	2	6	8**	29

*Mandatory Audit course 2 Hrs per week ** Non contact hours

R. V. College of Engineering, Bengaluru – 560059
(Autonomous Institution Affiliated to VTU, Belagavi)
SECOND SEMESTER CREDIT SCHEME FOR PHYSICS CYCLE

COMMON TO ALL PROGRAMS

Sl.No	Course Code	Course Title	BOS	CREDIT ALLOCATION				Total Credits
				Lecture	Tutorial	Practical	SS(EL)	
1	16MA21	Engineering Mathematics-II	Maths	3	1	0	1	5
2	16PH22	Engineering Physics (Theory and Practice)	Physics	4	0	1	0	5
3	16CV23	Elements of civil Engineering	CV	4	1	0	0	5
4	16ME24	Computer Aided Engineering Drawing (Theory and Practice)	ME	1	0	2	0	3
5	16EE25	Elements of Electrical Engineering	EE	4	0	0	1	5
6	16HSC26	Constitution of India and Legal Studies for Engineers	HSS	2	0	0	0	2
7	16HSK27*	Kannada*	HSS	1	0	0	0	0
		Total No. of Credits						25
		No. Of Hrs.		19	04	6	8**	29

***Mandatory Audit course** 1 Hr per week ** Non contact hours

R. V. College of Engineering, Bengaluru – 560059
(Autonomous Institution Affiliated to VTU, Belagavi)
SECOND SEMESTER CREDIT SCHEME FOR CHEMISTRY CYCLE

COMMON TO ALL PROGRAMS

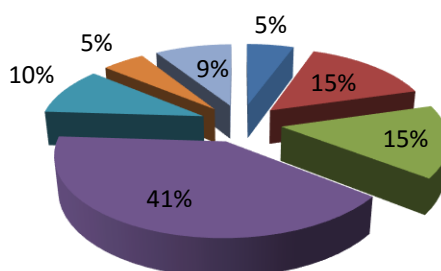
Sl.No	Course Code	Course Title	BOS	CREDIT ALLOCATION				Total Credits
				Lecture	Tutorial	Practical	SS(EL)	
1	16MA21	Engineering Mathematics-II	Maths	3	1	0	1	5
2	16CH22	Engineering Chemistry (Theory and Practice)	Chemistry	4	0	1	0	5
3	16CS23	Programming in C (Theory and Practice)	CSE	4	0	1	0	5
4	16EC24	Basics of Electronic Engineering	ECE	4	0	0	1	5
5	16ME25	Basics of Mechanical Engineering (Theory and Practice)	ME	4	0	1	0	5
6	16HSE26*	Professional Practice-I (Communication Skills)	HSS	2	0	0	0	0
		Total No. of Credits						25
		No. Of Hrs.		21	2	6	8**	29

*Mandatory Audit course 2 Hrs per week ** Non contact hours

Course Component Credit Distribution Percentage

Sl.No.	Category	Percentage (%)	Minimum No. Of credits	Proposed 2016 scheme
1	Humanities	5-10	10	9+2
2	Basic Science	15-20	30	30
3	Engineering Science	15-20	30	30
4	Professional Core Courses(PC)	30-40	60	78+3=81 (3 credits core in place of Mini project in 7 th sem)
5	Professional Elective Courses	10-15	20	20
6	Other Electives	5-10	10	10
7	Project Work	10-15	20	16+2 Major project +Tech. Seminar
Total Credits				200

Course Component Credit Distribution Percentage



SEMESTER WISE CREDIT DISTRIBUTION(SELF STUDY CREDIT INCLUDED EXCEPT FOR VII SEM)								
I	II	III	IV	V	VI	VII	VIII	TOTAL
25 (P) / 25(C)	25/25	25	26	29	28	22	20	200