



RV College of Engineering®

Mysore Road, RV Vidyaniketan Post,
Bengaluru - 560059, Karnataka, India

Go, change the world®



Academic Planning, Assessment & Evaluation Process

Guidelines and Information of Postgraduate Programs

(WITH EFFECT FROM 2024-25)



VISION

Leadership in Quality Technical Education,
Interdisciplinary Research & Innovation, with a Focus on
Sustainable and Inclusive Technologies.

MISSION

- To deliver Outcome Based Quality Education, emphasizing on experiential learning with state-of-the-art infrastructure.
- To create a conducive environment for interdisciplinary research and innovation.
- To develop professionals through holistic education focusing on individual growth, discipline, integrity, ethics and social sensitivity.
- To nurture industry-institution collaboration leading to competency enhancement and entrepreneurship.
- To focus on technologies those are sustainable and inclusive, benefiting all sections of the society.

QUALITY POLICY

Achieving Excellence in Technical Education, Research and Consulting through an Outcome Based Curriculum focusing on Continuous Improvement and Innovation by Benchmarking against the global Best Practices.

CORE VALUES

Professionalism, Commitment, Integrity, Team Work and Innovation.



GLOSSARY OF ABBREVIATIONS

1.	Academic Autonomy	Freedom given to a College in all aspects of conducting its academic programs, granted by the University for promoting excellence (within the guide lines of VTU)
2.	AC	Academic Council
3.	Autonomous College	College designated as an autonomous college by the university, as per the VTU Autonomous College Statute- 2006.
4.	AUD	Audit Course
5.	AEC	Ability Enhancement Course
6.	BoS	Board of Studies
7.	CIE	Continuous Internal Evaluation
8.	Commission	University Grants Commission
9.	Council	All India Council for Technical Education
10.	CGPA	Cumulative Grade Point Average
11.	GAC	Grading Advisory Committee
12.	Lateral Entry	Such students who have joined the program in the second year of four-year program
13.	MHRD	Ministry of Human Resources Development
14.	NSAR	Not Satisfied Attendance Requirement
15.	NSSR	Not Satisfied Sessional Requirement (did not get the Minimum CIE requirement to appear for SEE)
16.	Regular B.E.	Such students who have joined the program in the first year of four- year program
17.	SEE	Semester End Examination
18.	SGPA	Semester Grade Point Average
19.	University	Visvesvaraya Technological University (VTU)
20.	UG	Undergraduate Program
21.	PG	Postgraduate Program
22.	PH	Physics
23.	MCA	Master of Computer Applications
24.	MPD	M.Tech in Product Design & Manufacturing
25.	MDC	M.Tech in Digital Communication
26.	MCE	M.Tech in Computer Science & Engineering
27.	MVE	M.Tech in VLSI Design & Embedded Systems
28.	MCN	M.Tech in Computer Network Engineering
29.	MMD	M.Tech in Machine Design
30.	MCS	M.Tech in Communication Systems
31.	MPE	M.Tech in Power Electronics
32.	MST	M.Tech in Structural Engineering
33.	MSE	M.Tech in Software Engineering
34.	MIT	M.Tech in Information Technology
35.	MHT	M.Tech in Highway Technology
36.	MBT	M.Tech in Biotechnology
37.	MDC	M.Tech in Digital Communication
38.	RVU	R V University



CONTENT

Section No.	Sub-section	Title	Page No.
1.0	PROFILE OF THE INSTITUTION		
	1.1	Rashtreeya Sikshana Samithi Trust	6
	1.2	RV College of Engineering	6
	1.3	Outcome Based Education (OBE) with focus on Experiential Learning (EL)	7
	1.4	Inter-disciplinary Research & Innovation	7
	1.5	Industry-Institute-Interaction & Placement	9
	1.6	Student Activities	10
	1.7	Entrepreneurship Cell	10
	1.8	International Collaborations	10
	1.9	Environment & Sustainability	12
	1.10	Governance	12
	1.11	Programs offered by the institution	13
2.0	ADMISSION PROCESS		
	2.1	Eligibility Rules for Admission to Master of Technology Program (M.Tech)	15
	2.2	Eligibility Rules for Admission to Master of Computer Applications Program (MCA)	15
	2.3	Program Duration for M.Tech / MCA Program	16
	2.4	Nomenclature of PG. Programs	16
3.0	ACADEMIC PLANNING		
	3.1	Academic Planning for PG Program	17
	3.2	Semester Registration/Dropping/Withdrawal of Courses	18
	3.3	Attendance Requirement	19
	3.4	Termination from the Program	20
	3.5	Semester Scheme	20
	3.6	Credit Structure	21
	3.7	Credits Requirement for PG Programs	22
4.0	ASSESMENT AND EVALUATION SYSTEM		
	4.1	Achievement Testing	23
	4.2	Continuous Internal Evaluation (CIE)	24
	4.3	Grading System	29
	4.4	Passing Standards	31
	4.5	Schedule of Examinations	32
	4.6	Vertical Progression	32
	4.7	Paper Viewing Process (PVP)	33
	4.8	Malpractice	33
	4.9	Rejection of Results	34



	4.10	Grade Cards	34
	4.11	Percentage Equivalence of Grade Points	34
	4.12	Graduation Ceremony	35
5.0	VALUE ADDED COURSES & SERVICES		
	5.1	Finishing School	37
	5.2	Professional Societies	37
	5.3	Scholarship facility	37
	5.4	Library and Information Centre	39
	5.5	Placement and Training	41
	5.6	Hostel Facility	41
6.0	EXTRA CURRICULAR ACTIVITIES		
	6.1	Cultural Activity Teams	43
	6.2	Innovative Teams	45
	6.3	NCC Activities	45
	6.4	NSS Activities	46
7.0	DISCIPLINARY MEASURES		
	7.1	General Discipline	48
	7.2	Anti-Ragging Rules	48
	7.3	Dress Code	49
	7.4	Mobile Phone	49
	7.5	Security Issues	49
	7.6	Support Services	50
ANNEXURE-I: KEY EXECUTIVES			



1.1 RASHTREEYA SIKSHANA SAMITHI TRUST (RSST)

Committed towards the dissemination of knowledge for the last 8 decades, we at Rashtreeya Sikshana Samithi Trust (RSST/RV) are dedicated to impart quality education in all disciplines. Our purpose of providing education at a higher scale was etched in stone in 1940 with the inception of the RV Higher Primary School by late M.C. Sivananda Sharma.

Described by many as insightful and hardworking, he was born and raised in a village called Madarahalli where he discovered his passion for reading books and learning from a young age. Inspired by the teachings of Mahatma Gandhi, Sri. Sivananda Sharma joined the Indian Independence movement as a freedom fighter, where he realized his purpose of providing quality education for the development of the country. Following the principles of the Indian educationist Pandit Madan Mohan Malaviya, he initiated the journey of RV Educational Institutions (RVEI) from a single classroom with an enrolment of 6 students.

Today, our educational ecosystem consists of more than 20 institutions, which are supported by more than 2000 staff members, with nearly 20000 students. Our academic infrastructure comprises of degree colleges, health science institutions, technology institutions, pre-university colleges & schools. We initiated RV-Skills to provide industry centered courses in Artificial Intelligence (AI), Automotive Engineering (AE) and Very Large System Integration (VLSI). Latest addition is RV University (RVU), a State Private University which has been established in Karnataka State, with RSST as the sponsoring body in the year 2020. RVU is offering UG, PG and Doctoral degree in Liberal Arts and Sciences, Design, Law, Computer Science, Economics and Finance. Additionally, we also have an Incubation Centre to guide & fund budding start-ups.

RV Institutions are dedicated to the mission of providing “excellence in education with societal commitment”. The institutions provide equal opportunities to underprivileged and students with special needs. We also undertake social welfare initiatives through our institutions by organizing health camps, enhancing education in government schools and community awareness programs in rural areas.

We earnestly endeavor to make every student a success story. Our motto “Go, Change the world” inspires us to create a holistic educational experience, which empowers our students to grow and develop as global leaders who can revolutionize their respective fields for the betterment of society.

1.2 RV COLLEGE OF ENGINEERING (RVCE)

RV College of Engineering (RVCE), established in 1963, is one of the earliest self-financing engineering colleges in the country. The institution is run by Rashtreeya Sikshana Samithi Trust (RSST), a not-for-profit Trust. RVCE is an Autonomous college. Currently, the institution offers 15 Bachelor, 14 Master Programs and all the departments have Research Centers, affiliated to Visvesvaraya Technological University (VTU) Belagavi. The institution has set itself a Vision **“Leadership in Quality Technical Education, Interdisciplinary Research & Innovation, With a Focus on Sustainable and Inclusive Technology”**.



Recent awards and achievements include – NAAC accreditation 'A+' grade, Ranked 99th in the Country by National Institutional Ranking Framework (NIRF-2024), Ranked 7th in the country & 2nd in Karnataka – IIRF Ranking (2024), Ranked 4th among the top 10 of 100 Pvt. Engg. Colleges in the Country by Education World Magazine-24, Ranked 1501+ in Times Higher Education World University Rankings-2025. Ranked 1001+ in Computer Science and 1251 Rank in Engineering category in THE World University Rankings-2024, Ranked 1501+ in Impact Ranking -2024, Ranked 601+ in Asia World University Rankings (Asia)-2025, and NPTEL (Local Chapter) “AAA” Rating.

The institution has to its credit over 1500 National and International Journal publications, filed 77 patents, 65 published patents, 45 granted patents, completed sponsored research and consultancy projects worth Rs. 20.0 crores in the last three years. The institution has established more than 27 Centers of Excellence / Centers of Competence in niche areas of science and technology. All the eligible UG and PG programs have been accredited by NBA multiple Times. Six UG Programs and 1 PG program have been accredited for six and five years respectively by NBA. The students have won awards and accolades in national and international competition

1.3 OUTCOME BASED EDUCATION (OBE) WITH EXPERIENTIAL LEARNING (EL)

RVCE was granted Autonomous Status by the VTU, UGC and Government of Karnataka in the year 2007 for its undergraduate programs and in the year 2016 for postgraduate programs. Being an Autonomous college affiliated to VTU, RVCE prescribes its own syllabi and academic activities. The institution has implemented Outcome Based Education (OBE), with a focus on ICT and project-based learning to enhance critical thinking ability. The institution has introduced experiential learning to motivate students to innovate, bring in teamwork and lifelong learning & encourage students to form multidisciplinary groups for major projects, leading to securing funded projects. The programs are designed with requisite number of foundation courses, advanced courses, SWEBOK, MOOCS, NPTEL, QEEE, industry-based electives and laboratories to facilitate enhancement of competence of the students in all the relevant domains and render them employable, prepare them for higher studies, entrepreneurship and public service.

The academic activities concentrate on helping the students to gain an excellent theoretical knowledge base and in the development of skills to implement them. The latest teaching aids from multimedia equipment to simulation techniques ensure a thorough learning process. The college regularly invites experts and industry professionals to impart practical skills and lessons to students. Industrial visits are encouraged to help the students to grasp the technology at work. It is up to the student to take advantage of opportunities provided and build a bright future.

1.4 INTER-DISCIPLINARY RESEARCH & INNOVATION

By identifying institutional strength, interdisciplinary research areas have been identified, with the emphasis on creating a Unique Selling Point (USP) for the institute. RVCE is looking to contribute to sustainable development as practiced in ancient India and as advocated by the father of the Nation Mahatma Gandhi. The motto is, “Leveraging global knowledge and delivering local solutions”. The



institution graduated to a teaching and research institution, making use of large number of faculty with doctoral degree on its rolls. Research motivation includes incentivizing faculty to take up sponsored research and consultancy.

The institution has established various Centers of Competence/Excellence in the campus.

Table 1.4 Centers of Competence / Excellence

Sl. No	CENTRE OF EXCELLENCE (COE)
01	Materials Fabrication and Characterization (CoE-MFC)
02	Internet of Things -CISCO-RVCE
03	e-mobility
04	Smart Antenna Systems and Measurements (SASM)
05	Computational Genomics
06	Quantum Computing
07	Logistics & Supply Chain Management
08	Computer Vision Research (Next Generation AI Enabled)
09	Cognitive Intelligent Systems for Sustainable Solutions (RVCE- HPCC)
10	AI Research and Business Solutions
11	Autonomous Vehicles
12	Nanomaterials and Devices
13	Health Care Technologies and Innovation,
14	5G and Emerging Wireless Technologies
16	3S Infrastructure Safe, Sustainable & Smart Infrastructure (3S)-
17	Extended Reality Centre for Education and Research
18	Hydrogen and Green Technology
Sl. No	CENTRE OF COMPETANCE
01	RV- Bosch Rexroth- Centre of Competence in Automation Technologies
02	Smart Vidyuth and Sustainable Solutions
03	RV- Mercedes Benz Centre for Automotive Mechatronics-
04	Integrated Circuits and Systems
05	Women in Cloud Centre of excellence in India
06	Sensor and Sensor Applications Technology
07	RV- Toyota Kirloskar Centre of excellence in Automotive Engineering,
08	Automation and Robotics (Digital Manufacturing),
09	Education & Digital Learning Research (CEDLR)
10	Advanced Automotive Systems (Decibels)
11	RVCE Morris Garage-Centre of Excellence in Electric Vehicle Technology-

➤ **Wipro-IISC Research & Innovation Network Consortium (WIRIN)**

Wipro, IISc and RV College of Engineering have signed up an MOU that promotes collaborative research in artificial intelligence, machine learning, computer vision, and human machine interaction, related to autonomous systems and robotics. The key objective of the initiative is to promote research and education in this emerging area leading to end-to-end system development and capacity building.



An autonomous car is a vehicle capable of sensing its environment and operating without human involvement. The Society of Automotive Engineers (SAE) currently defines 6 levels of automation ranging from level 0 (fully manual) to level 5 (fully autonomous). The principal activities include Collaborative research projects involving RVCE and IISc faculty members and Wipro researchers in topics and problems of relevance to autonomous systems and robotics - especially in artificial intelligence, machine learning, computer vision, and human machine interaction.

A lab has been set up in our college campus for carrying out all the activities related to this WIRIN Project. Some of the major activities which are being carried out include Data Collection and Annotations for the preparation of National Dataset in Indian Road Conditions, Designing and fabrication of the Vehicle, Development and Implementation of various Machine Learning and Deep Learning Algorithms etc. Students of almost all the branches are involved in this project. Future scope of this project is to promote the research in the field of autonomous vehicles and inculcate the importance of research in students.

The Automotive Mechatronics skill-based training school at RV - Mercedes Benz Centre began in August 2018 with the aim of providing deep insight into automotive systems. The parent company Daimler AG, Germany along with Mercedes-Benz India and RV College of Engineering joined hands to start the program and train students to address the requirements of Mercedes-Benz technology and innovation. 'Advanced Diploma in Automotive Mechatronics (ADAM)' aims to produce qualified, industry-ready professionals to be recruited at dealerships of MBIL as well as other brands of automobiles, automotive manufacturing plants and also at automotive R&D centers.

RVCE has established a knowledge and skill-based training centers such as Bosch Rexroth Automation Technologies Labs, Tata Ready Engineer's program. RVCE has conducted training on computer hardware, software and solar maintenance for rural students under Suryamitra scheme –Sponsored by AICTE.

1.5 INDUSTRY INSTITUTE INTERACTION & PLACEMENT

RVCE is rapidly expanding its R&D activity and Industry-Academic collaborations. Companies have set up their lab in the campus for students to continue their projects under them, which in return is making a student-company rapport, enhancing students' employability. Faculty and students are involved in executing industrial consulting works. The collaboration has been fruitful so far with student's interaction with industry personnel has been increased by means of industrial visits, internships, expert lectures and skill-based trainings. The collaborations are increasing year after year to meet the requirements of industry and RVCE has been a perfect launching pad for students.

RVCE has signed MoUs with over 100 companies across the world to help students to get internships, find research and consultancy projects for its faculty members.

RVCE has seen a phenomenal increase in terms of number of offers and salary packages in the recent years. More than 250 private and public sector companies visit for campus recruitment. Increased number of visits by the leading organizations for their talent search/recruit cutting across various sectors, which includes Software Engineering & Information Technology, Chemical Process, Health Care, Bio



Process, Pharmaceutical, Construction, Manufacturing & Production, Consultancy, Business Analytics & Supply Chain Management, e-Commerce & Retail Business, Global Finance & Banking Service, Research & Development. Some of the companies visiting for recruitment in the above domains include Atlassian, Arcesium, Citrix, Adobe, Cloudrea, Commvault, Goldman Sachs, Microsoft, Morgan Stanley, Paypal, Qualcomm, Sales force, SAP, Udaan, Walmart, Deloitte, KPMG, PwC, WDC, Intel, Cisco, TI, NI, NXP, Samsung, Robert Bosch, Wipro, ABB, MindTree, Infosys, Cognizant, Tejas Networks, Boeing, Airbus, IQVIA, Axis Bank Limited, Federal Bank and many more.

1.6 STUDENT ACTIVITIES

NSS, NCC and Rotaract Team at RVCE organize various events related to Community and Social services. Students are encouraged to participate in these events. Also, Cultural Activity teams help the students to identify their talents and provide platform to showcase their talents. RVCE also encourages students' participation in Sports and sports persons are given adequate facilities in terms of allowances, uniforms and attendance to compete in university, interstate, national and international competitions.

RVCE has more than 16 INNOVATIVE TEAMS including Hybrid automobile vehicles, Unmanned Aviation Vehicles (UAV), Drones, Robots and Racing Cars. Students were encouraged to participate in various competitions. They have consistently won many awards at the Regional, University, National and International level competitions. These teams are mentored by faculty and industry executives/experts. The institution also has 24 professional societies.

1.7 ENTREPRENEURSHIP CELL

The institute has been educating students about entrepreneurship for the past 10 years. The younger generation is more interested in incubating their ideas and making them into their own ventures once they are out of the campus. RVCE has created an ecosystem in the campus to learn entrepreneurship. There are 5-6 courses available for students from the first year. They will learn subjects like Intellectual Property Rights, Management & Behavior Science, Economics, Systems Engineering and many more. RVCE also has an Entrepreneurship Development Cell with over 200 students as members of it. The college has tied up with over 15 companies to give the guidance and support needed for student entrepreneurs.

1.8 INTERNATIONAL COLLABORATIONS

The institution has signed MoU with University of Applied Sciences (THWS) Wurzburg-Schweinfurt, Germany, Dortmund University of Applied Science and Arts-Germany and Florida International University, Miami, USA, University of the West of Scotland-Paisley, UK and jointly working in the area of Robotics and Automation, Business Engineering, Logistics, Mechatronics, Augmented Reality, Virtual Reality and E-Mobility.

RV College of Engineering (RVCE) actively fosters international academic partnerships to enhance global exposure, promote cross-cultural knowledge exchange, and create impactful research and development outcomes. The institution has signed Memoranda of Understanding (MoUs) with a number of globally reputed universities



and institutions, enabling a wide range of collaborative academic and research initiatives.

Partner Institutions

Germany:

- **University of Applied Sciences Würzburg-Schweinfurt (THWS)** – A long-standing partnership spanning over a decade, involving student and faculty exchange, joint research, and dual-degree initiatives.
- **University of Applied Sciences and Arts Dortmund** – Collaborating on design, business engineering, short term certificate course and interdisciplinary projects.
- **RWTH Aachen University** – One of Germany's top technical universities, fostering advanced research collaborations and short-term certificate courses
- **Rosenheim Technical University of Applied Sciences** – Engagement in the areas of mechatronics, automation, and industry-focused programs.
- **University of Applied Sciences Dresden** – Focused on engineering, mobility solutions, semi-conductors and innovative project-based learning.

United States:

- **Florida International University (FIU), Miami** – A comprehensive collaboration across engineering, innovation, and student mobility programs.
- **The University of Iowa, Iowa City** – Working together on academic exchange, research projects, and student internships.

Areas of Collaboration

These partnerships span a diverse range of academic and industrial domains, including but not limited to:

- ✓ Robotics and Automation
- ✓ Business Engineering
- ✓ Logistics and Supply Chain Management
- ✓ Mechatronics and Embedded Systems
- ✓ Augmented Reality (AR) & Virtual Reality (VR)
- ✓ E-Mobility and Smart Transportation
- ✓ Circular Economy and Sustainability

Key Collaborative Activities

The focus of these international collaborations is multi-dimensional, involving:

- **Joint Research and Paper Publications:** Faculty and students co-author research papers in reputed journals and conferences, enhancing the global research footprint.
- **Execution of Funded Projects and Consultancy:** Joint project execution with international partners, including industry-supported initiatives and consultancy assignments.
- **Certificate Programs and Skill Development:** Hosting international certification programs, technical workshops, and short-term training in cutting-edge domains.



- **Student Internships and Project Work:** Opportunities for students to undertake research projects and internships abroad, providing international exposure and industry experience.
- **Faculty Exchange and Sabbaticals:** Facilitating academic exchange and sabbatical programs for faculty members to engage in teaching, research, and collaborative development overseas.
- **Conferences and Joint Programs:** Co-hosting international conferences, symposiums, and academic programs to promote dialogue on emerging global challenges and technologies.

1.9 ENVIRONMENT & SUSTAINABILITY

RVCE's vision focuses on 'sustainability' and accordingly explores, initiates & addresses environmental issues with a clear-cut direction on 3Rs (i.e., Reduce, Reutilize, Recycle). Thus, aiming at conservation of resources and also gainfully harnessing renewable energy/rain water etc. In addition to making all out efforts in building awareness amongst the students & staff about the effect of our activities on the environment, Proactively the Institute is involved in a number of projects on alternate use of wastes or creation of new products.

The Institute has strong industry linkages with various firms for better exploitation/management of vital resources viz. i) KPMG for rain water harvesting, ii) PCB for air quality & noise monitoring, iii) ISRO for automatic weather monitoring etc. to name a few. As an environmental initiative, the Institute has introduced several courses on Environment in the curriculum at UG level. These include courses on Environment Technology, Biology for Engineers and Global Electives on Green Technology, Solid waste Management, Renewable Energy, air pollution control engineering, Water supply Engineering, Waste water Engineering, Industrial wastewater treatment, Environmental impact assessment, Hazardous waste management etc. Further to bring in awareness, the Institute also conducts programs like talks by experts in the field, conducting National/International conferences/workshops, street plays, panel discussions etc that highlight emerging environmental issues and facilitate dialogue among key stakeholders.

Renewable resources exploitation efforts include installation of 500 KWP roof top solar power station and solar water heaters in all the Hostels, Rain Water Harvesting (RWH) system etc. The Institute has an excellent Waste Management System to collect, segregate and dispose of the waste generated.

1.10 GOVERNANCE

The Governing Body of the institution consists of academicians, policy makers, industrialists, philanthropists and nominated student members. This helps in balanced policy making, utilization of funds and student as well as staff welfare measures. The long-term plans have been laid down in the strategic plan document in consultation with Department committees, joint workshops of senior professors for strategy formulation. The Institutional has many Committees consisting of HoDs, Deans & Associate Deans, who are responsible for continuous improvement through identifying needs, bringing in discipline, defining academic & research activities,



future plans etc. Various Deans viz. Academic, Student Affairs, R&D and PG Studies (circuit), PG Studies (Non circuit), Dean (Skill Development), dean placement, Dean International affairs, are responsible for implementation, outcomes and improvements in their respective areas of responsibility at the institutional level. Feedback systems are in place to know about the gap that exists in the current academic and other practices to identify opportunities for continual improvements in the institutional processes and practices and the monitoring is through IQAC. Also SAP-ERP software is used for administration, Human resource management and Finance..

Mobile apps are developed for purchase and leave management. The institution has established a sound value system in terms of human resource policies and service rules for the employees implemented with no discrimination. SAP ERP package is implemented for Modules such as - Finance & Controlling (FICO), Human cost Management (HCM), Materials Management (MM), Success Factor involving Leave Management System (SF) and Student Life Cycle Management (SLCM). The college currently has student strength of about 5700, faculty strength of around 370, Technical & Administrative Staff around 230 and about 360 Research Scholars are pursuing Ph.D.

1.11 PROGRAMS OFFERED BY THE INSTITUTION

(A) UNDERGRADUATE PROGRAMS:

Sl. No.	Program	Year of Starting	Program code
1.	B.E. in Civil Engineering	1963	CV
2.	B.E. in Mechanical Engineering	1963	ME
3.	B.E. in Electrical & Electronics Engineering	1963	EE
4.	B.E. in Electronics & Communication Engineering	1972	EC
5.	B.E. in Industrial Engineering & Management	1980	IM
6.	B.E. in Chemical Engineering	1982	CH
7.	B.E. in Computer Science & Engineering	1984	CS
8.	B.E. in Electronics & Telecommunication Engineering	1992	ET
9.	B.E. in Information Science & Engineering	2000	IS
10.	B.E. in Biotechnology	2002	BT
11.	B.E. in Aerospace Engineering	2015	AS
12.	B.E. in Computer Science & Engineering (Artificial Intelligence & Machine Learning)	2021	AI
13.	B.E. in Computer Science & Engineering (Data Science)	2022	CD
14.	B.E. in Computer Science & Engineering (Cyber Security)	2022	CY

(B) POSTGRADUATE PROGRAMS:

Sl. No.	Program	Year of Starting	Program Code
1.	Master of Computer Applications	1997	MCA
2.	M.Tech in Product Design & Manufacturing	2004	MPD
3.	M.Tech in Digital Communication	2004	MDC
4.	M.Tech in Computer Science & Engineering	2004	MCE
5.	M.Tech in VLSI Design & Embedded Systems	2005	MVE



6.	M.Tech in Computer Network Engineering	2005	MCN
7.	M.Tech in Machine Design	2006	MMD
8.	M.Tech in Communication Systems	2006	MCS
9.	M.Tech in Power Electronics	2006	MPE
10.	M.Tech in Structural Engineering	2006	MST
11.	M.Tech in Software Engineering	2006	MSE
12.	M.Tech in Information Technology	2007	MIT
13.	M.Tech in Highway Technology	2009	MHT
14.	M.Tech in Biotechnology	2011	MBT

(C) RESEARCH CENTERS:

The following departments offer M.Sc (Engg.) by research and Ph.D., recognized by VTU.

Sl. No.	Program	Year of Starting
1.	Mechanical Engineering	1999
2.	Chemical Engineering	2000
3.	Electronics & Communication Engineering	2004
4.	Industrial & Engineering Management	2004
5.	Electronics & Telecommunication Engineering	2004
6.	Computer Science & Engineering	2004
7.	Civil Engineering	2005
8.	Biotechnology	2008
9.	Chemistry	2008
10.	Information Science & Engineering	2011
11.	Master of Computer Applications	2011
12.	Physics	2011
13.	Electronics and Instrumentation Engineering	2011
14.	Mathematics	2011
15.	Electrical and Electronics Engineering	2012

(D) DIPLOMA (UG & PG) AND CERTIFICATE COURSES /PROFICIENCY COURSES:

This will help in-house and external professionals and students to gain additional skills in the state-of-the-Art Technology and Science. Proficiency / Certificate courses are also being offered from time to time for both UG and PG students for upgrading their knowledge and skills. Such courses are open to outside participants also.



2.0 ADMISSION PROCESS

2.1 ELIGIBILITY RULES FOR ADMISSION TO MASTER OF TECHNOLOGY PROGRAM

Admission to the Master of Technology course shall be open to all the candidates who have passed BE/B.Tech Examination of VTU (as per the eligibility criteria specified from time to time) or any other University / Institution. The decision of the equivalence committee will be final in establishing the eligibility of the candidates for a particular course. For the candidates with foreign degrees equivalence certificate from the association of Indian Universities is a must.

Candidates who have completed their pre-requisite degree through the distance mode education are NOT eligible for admission to M.Tech.

Admission to M.Tech program shall be open to the candidates who have passed the prescribed qualifying examination with not less than 50% of the marks in the aggregate of all the years of the degree examination. However, in case of candidates belonging to SC/ST and Category I, the aggregate percentage of marks in the qualifying examination shall not be less than 45%.

The candidate must have secured the requisite marks in the entrance exam for PG Programs as per the Karnataka Examination Authority (KEA) or under GATE with an admission order from KEA are eligible for the admission to M.Tech Programs or through the entrance exams conducted by the University or RV College of Engineering.

For admission under the management quota: The candidates should have appeared and qualified in the Entrance Exam conducted by KEA or qualified under GATE or appeared and qualified through the entrance examination conducted by the University or RV College of Engineering.

There shall not be any transfer or migration from one branch to another branch or one college to another college for all PG programs

For more details log on to

- (i) **KEA website: <http://kea.kar.nic.in>**
- (ii) **VTU website: <http://www.vtu.ac.in>**

2.2 ELIGIBILITY RULES FOR ADMISSION TO MASTER OF COMPUTER APPLICATIONS PROGRAM

The approved sanctioned intake by AICTE is 120. For admission to Master of Computer Applications program the candidates shall have passed BCA/ Bachelor Degree in Computer Science and Engineering or equivalent Degree

OR

Passed B.Sc./ B.Com./ B.A. with Mathematics at 10+2 Level or at Graduation Level (with additional bridge Course as per the norms of the concerned University)

**2.3 PROGRAM DURATION for PG - M.Tech / MCA Programs**

- (a) The regular duration of a PG academic program is **TWO (2)** Years
- (b) The maximum duration to complete the full time PG program is **FOUR (4)** years.

2.4 NOMENCLATURE OF PG PROGRAMS

Sl. No.	Program	Program Code
1.	Master of Computer Applications	MCA
2.	M.Tech in Product Design & Manufacturing	MPD
3.	M.Tech in Digital Communication	MDC
4.	M.Tech in Computer Science & Engineering	MCE
5.	M.Tech in VLSI Design & Embedded Systems	MVE
6.	M.Tech in Computer Network Engineering	MCN
7.	M.Tech in Machine Design	MMD
8.	M.Tech in Communication Systems	MCS
9.	M.Tech in Power Electronics	MPE
10.	M.Tech in Structural Engineering	MST
11.	M.Tech in Software Engineering	MSE
12.	M.Tech in Information Technology	MIT
13.	M.Tech in Highway Technology	MHT
14.	M.Tech in Biotechnology	MBT



3.0 ACADEMIC PLANNING

3.1 Academic Planning for PG Program

- The curriculum is designed as per OBE and shall include General Engineering courses, Basic Science, Humanity & Social Sciences, Core Professional Engineering, Professional Electives and Global (Open) Electives and Project works.
- The percentage distribution / coverage of courses are as per the guidelines given by VTU / UGC / AICTE and Ministry of HRD, New Delhi.
- Individual Board of Studies (BoS) for each department takes care of formation of Scheme and Syllabus. The same is then approved by the Academic Council (AC) of the Institution.
- There shall be an equal emphasis on theory, practical / laboratory and workshops.
- Emphasis is also given for Self-study and experiential learning.
- Additions and deletions of any particular course have to be recommended by respective BoS and approved by the Academic Council of the Institution.
- Exclusive major projects and minor projects are also included in the curricula.
- Many interdisciplinary courses and open or global electives are also offered and a student can choose from these as per his/her interest.
- All students have to undergo **Continuous Internal Evaluation (CIE)** which includes Tests, Quizzes, Experiential learning.
- At the end of the semester eligible students have to take Semester End Examination (SEE) for both theory and practical as per the scheme.
- Students declared as Not Satisfied Attendance Requirements or Not Satisfied CIE Requirements, now termed as 'DX' are not eligible to take up Semester End Examination (SEE) in that particular Course including laboratory, if any.
- In case of successive failures, A student shall be permitted to avail Elective course substitution, if he/she fails in four attempts. This option is not permitted beyond a maximum of two (2) courses during the entire programme. This course substitution option is not permitted for core courses. More details are listed under section 4.4 c)

CALENDAR OF EVENTS: Academic Calendar will be prepared before the commencement of the academic year and published in the college website (www.rvce.edu.in)

College Timings: Monday to Friday: 9.00 AM to 5.00 PM

Saturday: 9:00 AM to 1:45 PM (Only on 2nd, 4th and 5th Saturday of the month)

Table 3.1 Academic Calendar

Number of Semesters/years	Two Main semesters (<i>Odd, Even</i>)
Semester Durations (Weeks)	Main semesters (<i>Odd, Even</i>):20 weeks each



If special / remedial classes are arranged by the departments, students will have to mandatorily stay beyond working hours/ timetable including Saturdays. These classes will be counted for attendance.

3.2 SEMESTER REGISTRATION/ DROPPING / WITHDRAWAL OF COURSES

- (a) **Every student has to register in person** at the beginning of every semester as per the notification issued by the office of the Dean Academics from time to time. Such students, who do not register within one week from the date of commencement of the semester, shall not be eligible to take up that particular semester. Parents are advised to note.
- (b) In case of any delay to register due to any exigency, the parent and student should intimate the Principal/Dean Academics / Dean Student Affairs / Head of the department, RVCE, in advance, indicating the reason for delay in registering. However, for such students also, **the attendance requirement shall be calculated from the date of commencement of the semester and not from the date of reporting to Institution.**
- (c) A student may be barred from registering for a semester for specific reasons for not registering, non-payment of fees, not eligible for the current semester due to lack of earning enough credits etc.
- (d) **Dropping of Courses:** A student can drop a course under the guidance of the counselor in the specified period (after one month from the date of commencement of the semester) if the counselor and parent feel that the student cannot cope up with all the courses. This dropping of course shall be intimated to the Dean Academics through the HoD & counselor & Dean (PG Studies) before the dropping date as announced in the calendar of events. However, the total credits should **NOT FALL SHORT OF 16 (SIXTEEN) CREDITS** which are the minimum number of credits to be registered per semester. **Dropping of the course is not treated as attempt; student must re-register for that course after 4th semester of the program. The dropped courses are not recorded in the Grade Card.**

Note:

- 1. If a candidate drops a course, then that particular course has to be taken up only in regular semester.
 - 2. **This facility is not applicable for first year students.**
- (e) **Withdrawal from Courses:** A student may opt to withdraw from a course on or before the date specified (normally one month before the end of semester) in the calendar of events. Such students who want to utilize this facility have to submit an application through the HoD to Dean Academics & Dean (PG Studies), in consultation with counselor, parent and HoD of the respective department. The candidate should have fulfilled the attendance criteria (for the course/s that he / she want to withdraw). **The withdrawn course(s) are recorded in the Grade Card as 'W' grade.** However, such withdrawals will be permitted without prejudice to the minimum number of credits as specified in (d). This facility is



not applicable for first year students. Such of those students, who have been declared “W” grade have to re-register during regular semester and earn both attendance & CIE and clear semester end examination. Such a candidate should have fulfilled the attendance requirement for the course(s) subject to maintaining the minimum requirement of 16 (Sixteen) credits for the semester.

*** ‘W’ Grade is treated as an attempt.**

3.3 ATTENDANCE REQUIREMENT

- a) Each semester is considered as a unit and the candidate has to put in a minimum attendance of 85% in each course with a provision for condonation of 10% of the attendance by the Principal, RVCE for reasons such as (i) serious medical condition or (ii) representing the Institute / University / State / Nation in sports, cultural, technical or academic activity with the permission of the Principal duly endorsed by Dean Student Affairs and Dean Academics. Even in such cases, a minimum of 75% attendance is absolutely mandatory. Documents have to be submitted and prior permission must be obtained from the Principal before attending the event. The students who do not satisfy this condition will be declared as **‘DX’**.

- b) If a student does not fulfill the attendance requirements in any course, he/she is not permitted to attend the Semester End Examination in that particular course.

c) TEMPORARY BREAK OF STUDY FROM THE PROGRAM

- (i) A student shall be permitted to withdraw temporarily on grounds like prolonged illness, grave calamity in the family or any other serious happenings, if a candidate intends to temporarily discontinue the program in the middle for valid reasons (such as accident or hospitalization due to prolonged ill health, grave calamity in the family or any other serious happenings) and wants to rejoin the program later in respective semester, he / she shall apply to the Principal, RVCE well in advance. Such application shall be submitted within **at least 6 weeks** of the commencement of the semester or from the date he/she has not attended the classes, whichever is later, stating fully the reason for such a withdrawal, together with supporting documents and endorsement of his/her parents/guardians through the Head of the Department.
- (ii) The institute shall examine such an application and if it finds the case to be genuine, it may permit the student to temporarily withdraw from the program. Such permission is accorded only to those (a) who have the possibility to complete the prescribed program requirements within the time limits specified by the university. (b) Who do not have any outstanding dues / demand at the college / University level including tuition fees, any other fees, library materials etc.
- (iii) The candidate has to rejoin the semester after the break from the commencement of the respective semester as and when it is offered.
- (iv) The total period for completion of the program is reckoned from the



commencement of the semester to which the candidate was first admitted and shall not exceed the maximum period of four years. The maximum period includes the break period.

- (v) If any candidate is detained for any reason, the period of detention shall not be considered as 'Break of Study'.
- (vi) A student availing of temporary withdrawal under the above provision shall be required to pay such fees and/or charges as may be fixed by the college until such time as his/her name appears on the Students' Roll list. However, it may be noted that the fees/charges once paid shall not be refunded. Normally, a student will be entitled to avail of the temporary withdrawal facility only once during his/her studentship of the program. However, any other concession for the student shall have to be approved by the Academic Council of the College. Hence, the student shall take the advice of the Principal to use the above provision only in exceptional cases.

3.4 TERMINATION FROM THE PROGRAM

A student shall be required to withdraw from the program and leave the Autonomous College on the following grounds.

- Absence from classes for more than six weeks at a time in a semester without leave of absence being granted by the competent Authority.
- Failure to meet the standards of discipline as prescribed by the college from time to time.

3.5 SEMESTER SCHEME

Each academic year is divided into two main semesters with their calendar, duration and academic activities fixed in advance by the College and as approved by the AC. The plan for implementing the Semester Scheme in the College is given in the Table below:

Table 3.2 Breakup of Academic Year into Semesters

Number of Semesters	There are two Main semesters
Internship/Industrial Training/Field Work during Summer Break (for M.Tech programs)	Students need to take up summer internship/ practical training / industrial training/ field work for a minimum period as per the University guidelines and part of the academic curriculum. For regular students, internship/ practical training / industrial training/ field work is between 2 nd and 3 rd Semester.
Semester Duration	Main Semester is for 20 Weeks including SEE exams or 90 or more working days (as per VTU).



Academic activities (Break up in weeks)	(a)Regular Semester: Registration for course- Three days Course work - 17 weeks from the starting date of registration, Examinations- 03 weeks TOTAL: 20 weeks Declaration of Results - One week
Examinations	Continuous Internal Evaluation (CIE) and Semester End Examination (SEE), both will have equal weightage in the student's performance evaluation in Course Work / Laboratory Work and other activities. (NOTE: The CIE quizzes and tests would be conducted on dates announced in advance as per the calendar of events and its results made known to the students from time to time)
Academic Calendar	The calendar of events for each academic year will be announced for Odd semester & Even semester, before the beginning of each academic year.

3.6 CREDITS STRUCTURE

The Credit Structure for M.Tech and MCA programs are as given in table 3.7.1 and 3.7.2 respectively.

Table 3.3 Credit structure for M.Tech Programs

Theory/ Lecture(L) (hrs/wk/sem)	Tutorials (T) (hrs/wk/sem)	Lab/Practical (P) (hrs/wk/sem)	Credits (L:T:P)	Total Credits
4	0	0	4:0:0	4
3	0	0	3:0:0	3
2	2	0	2:1:0	3
2	0	2	2:0:1	3
2	2	2	2:1:1	4
0	0	6	0:0:3	3

Table 3.4 Credit Structure for MCA Program

Lecture (hrs/wk/sem)	Tutorials (hrs/wk/sem)	Lab. Work (hrs/wk/sem)	Credits (L:T:P)*	Credits (Total)
0	0	4	0:0:2	2
2	0	0	2:0:0	2
3	0	0	3:0:0	3
4	0	0	4:0:0	4
3	2	0	3:1:0	4
3	0	2	3:0:1	4
0	0	8	0:0:4	4
3	2	2	3:1:1	5
4	2	0	4:1:0	5
4	0	2	4:0:1	5

**3.7 CREDITS REQUIREMENT FOR PG PROGRAMS**

The total number of credits required to be earned by students to qualify for the various Degree/Certificate programs are given in Table 3.8.1.

Table 3.5 Total number of credits required to be earned by students.

Program	Normal Duration Years (semesters)	Total No. of Credits to be earned
M.Tech Degree	2 years (4 semesters)	80
MCA Degree	2 years (4 semesters)	80

Table 3.6 Credit Distribution for M.Tech Programs

Credit distribution for M.Tech Program			
Sl. No	Category	Credit Percentage(%)	Credits Assigned 2024 scheme
1	HSS	0-5%	1
2	Basic Science	4-5%	4
3	Professional Core	31%	19
4	Professional Electives	22 -23%	19
5	Other Electives (Global)	3-4%	5
7	Internship	5-6%	6
8	Project Work	30-31%	26
Total Credits (%)		100	80

Table 3.7 Credit Distribution for MCA Program

Credit distribution for MCA Program			
Sl. No.	Category	Credit Percentage(%)	Credits Assigned 2024 scheme
1	HSS (AUD/AEC)	4%	1
2	Basic Science	5%	4
3	Professional Core	9%	11
4	Integrated Professional Core	38%	16
5	Professional Electives	12%	19
6	Open Electives	3%	0
7	Technical Seminar	2%	2
8	Project Work/Internship	27%	27
Total Credits		100	80



4.0 ASSESSMENT AND VALUATION SYSTEM

4.1 ASSESSMENT TESTING

- a) Assessment testing will be done in two parts as follows, both of them being important **in assessing the student achievement:**
- (i) Sessional, involving **Continuous Internal Evaluation (CIE)** will be conducted by the course teacher all through the semester. The evaluation process has three parts, executed by way of Quizzes (Q), Tests (T) and Experiential learning (EL). The evaluation of assignment could be descriptive / analytical type assessment spread throughout the semester, weekly/fortnightly assignments, problem solving, group discussions and seminars depending on the course. CIE could also be evaluated by experiential learning, collaborative learning, project-based learning, problem-based learning, web-based learning, game-based learning, computer-support collaborative learning, mobile assisted learning and seamless puzzle-based learning. The tests have to be written in the official booklets. It is the student's responsibility to see and confirm the evaluation and marks obtained after each test. After ascertaining that he/she has obtained the marks as per the performance, the student shall sign in the blue book after each test.
- (ii) The following examinations are to be conducted in an academic year:
- In Odd Semester: CIEs during the semester and SEE at the end of the semester for the courses offered in the odd semester only.
 - In Even Semester: CIEs during the semester and SEE at the end of the semester for the courses offered in the even semester only.
 - Makeup Examinations: For students of PG programmes with transitional grades viz., 'T' & 'X' grades in odd and even SEE shall be given makeup exams after the announcement of SEE results of respective odd and even SEE.
 - Supplementary examination for first semester failed students would be conducted along with second semester SEE and supplementary examination of second semester failed students would be conducted along with 3rd semester SEE.
- (iii) Terminal Examination designated as **Semester End Examination (SEE)** will be conducted jointly with an external examiner. This will include a written examination for theory courses and practical/design examination including viva-voce for laboratory / design courses. Controller of Examinations (CoE) in coordination with Dean Academics, and Board of Examiners implements the SEE process.
1. CIE and SEE will have **EQUAL (50:50) WEIGHTAGE.**
 2. A student's performance in a course is judged by considering the performance in both CIE and SEE.
 3. Faculty Advisors / Counselors will monitor the student's CIE performance; take necessary further steps to advice the student accordingly. As a follow up of this, each student will be advised to continue with the average load/credits, drop of courses or withdraw from them as indicated in section 3.2.
 4. Students shall be allowed to choose the elective/s, depending on their career plans, and there shall not be any restriction on the minimum number of students to be registered for an elective course.

**4.2 A. INTERNAL ASSESSMENT****4.2.1 SCHEME OF CONTINUOUS INTERNAL EVALUATION FOR THE THEORY COURSES:****CONTINUOUS INTERNAL EVALUATION (CIE):**

TOTAL MARKS: 40 + 20 + 40 = 100
[T] [Q] [EL]

Table 4.2.1 Scheme of Assessment Evaluation

	CIE	SEE
WEIGHTAGE	50%	50%
QUIZZES [Q]		
Quiz-I & II	Each QUIZ will be conducted for 10 Marks adding up to 20 MARKS.	*****
THEORY COURSE [T] (Bloom's Taxonomy Levels: Remembering, Understanding, Applying, Analyzing, Evaluating, and Creating)		
Test – I	Each test will be conducted for 50 Marks adding up to 100 marks. Final test marks will be reduced to 40 MARKS	*****
Test – II		
EXPERIENTIAL LEARNING [EL]	Maximum Marks: 40	*****
Case Study-based Teaching-Learning	10	*****
Program Specific Requirement for the EL Assessment	20	
Video based seminar (4-5 minutes per student)	10	
MAXIMUM MARKS FOR THEORY	100	100

4.2.2 SCHEME OF CONTINUOUS INTERNAL EVALUATION FOR COURSES WITH INTEGRATED LABORATORY, CONTINUOUS INTERNAL EVALUATION (CIE):
TOTAL MARKS: 10[Q]+30 [T]+30[EL]+30[LAB]= 100**Table 4.2.2 Scheme of Assessment Evaluation**

	CIE	SEE
WEIGHTAGE	50%	50%
QUIZZES [Q]		
Quiz-I & II	Each QUIZ will be conducted for 10 Marks adding up to 20 marks.	*****
THEORY COURSE [T] (Bloom's Taxonomy Levels: Remembering, Understanding, Applying, Analyzing, Evaluating, and Creating)		



Test – I	Each test will be conducted for 50 Marks adding up to 100 marks. Final test marks will be reduced to 40 MARKS	*****
Test – II		
EXPERIENTIAL EARNING [EL]	40	*****
Case Study-based Teaching-Learning	10	*****
Program Specific Requirement for the EL Assessment	20	
Video based seminar (4-5 minutes per student)	10	
MAXIMUM MARKS FOR THEORY [Q+T+EL]	100	150
PRACTICALS	50	
TOTAL MARKS FOR THE COURSE	150	150

4.2.3 SCHEME OF CONTINUOUS INTERNAL EVALUATION FOR LABORATORY ONLY COURSES CONTINUOUS INTERNAL EVALUATION (CIE):

TOTAL MARKS: LAB -40 + EL - 10 = 50

Table 4.2.2 Scheme of Assessment Evaluation

	CIE	SEE
WEIGHTAGE	50%	50%
LAB (Record marks + LAB Test)	40	*****
EXPERIENTIAL EARNING [EL]	10	*****
TOTAL MARKS FOR THE COURSE	50	50

Minimum CIE shortage:

A student satisfying the attendance requirement but failing to meet the passing standard with respect to CIE (Refer to section 4.2 A for the passing standard) in any credited course(s) registered shall not be allowed to appear for SEE in that course, and such course shall be marked as 'DX' in the grade card.

Such students from PG Programmes having 'DX' grade in a course may be permitted to register afresh in the subsequent Odd/Even semester (as there is no summer semester for PG programmes) and appear for SEE after satisfying the minimum CIE and attendance requirements in the same course.

Note: The Classes for re-registered courses with 'DX' grade in the PG programmes shall be conducted during a time that will not overlap with the regular Odd/Even Semester timetable. Students will have to attend the classes as per the timetable for the re-registered courses.

**4.2.4 ASSESSMENT OF MOOC COURSES**

- The candidate obtaining “F” grade in MOOC course have to re-register for the course in NPTEL / SWAYAM platform only. The failed course must be cleared / passed in ONLINE mode only.
- The candidate is permitted to change the MOOC course in his second attempt. The respective BoS may propose an alternative course with same credits and complexity out of bunch of courses with the approval from the Office of Dean Academics.
- The candidate must register and complete the course in ONLINE MODE ONLY.

4.2 B. Semester End Examination (SEE) - Theory

The scheme of SEE is given in Table below:

RUBRICS for SEE Theory courses		
Q.NO	Contents	Marks
Each unit consists of TWO questions of 20 Marks of each. Answer FIVE full questions selecting ONE from each unit [unit 1 to 5]		
1 & 2	Unit 1: Question 1 or 2	20
3 & 4	Unit 2: Question 3 or 4	20
5 & 6	Unit 3: Question 5 or 6	20
7 & 8	Unit 4: Question 7 or 8	20
9 & 10	Unit 5: Question 9 or 10	20
	Total Marks	100

RUBRICS for SEE Integrated Theory courses with Laboratory		
Q.NO	Contents	Marks
Each unit consists of TWO questions of 20 Marks of each. Answer FIVE full questions selecting ONE from each unit [unit 1 to 5]		
1 & 2	Unit 1: Question 1 or 2	20
3 & 4	Unit 2: Question 3 or 4	20
5 & 6	Unit 3: Question 5 or 6	20
7 & 8	Unit 4: Question 7 or 8	20
9 & 10	Unit 5: Question 9 or 10	20
	Theory Exam Marks	100
	Laboratory Exam Marks	50
	Total Marks	150

**Semester End Examination (SEE) - laboratory only course**

RUBRICS for SEE Laboratory only courses		
Sl.No.	Contents	Marks
1	Design and development of Project	20
2	Presentation of the working mode/simulation results/prototype building	20
3	Viva voce	10
	TOTAL	50

SEE EVALUATION AND GRADING

- I. In case of theory examination, the answer script will be evaluated by Internal course experts with 30% moderation from external examiners
 - a. If the difference between the marks awarded by the two evaluators is **less than 15%** of the maximum marks, the marks awarded by the moderator shall be considered for final grading.
 - b. If the difference in marks between the two evaluators **is more than 15%**, the matter will be discussed by both the evaluators with CoE, to award the final marks for grading.
- II. In case of laboratory examination, evaluation will be carried out jointly by two examiners. There is no provision for revaluation in case of practical exams.
- III. After the ODD/EVEN Semester, the Semester end examinations of all the courses of odd/even semesters are conducted to facilitate students to appear for the Backlog courses ('F' Grade/ 'AB' grade) of previous semesters, if any, and also to facilitate to appear for the examinations of DX' grade courses after meeting the minimum attendance and CIE requirements.
- IV. Students who have satisfied the attendance and CIE requirements for the course/s, appears for the SEE, but fails to obtain the head of passing in that course/s (Refer to section 7.6 for the passing standard) will be awarded 'F' Grade.
- V. Students who have satisfied the attendance and CIE requirements for the course/s, but are absent for the SEE of that course/s will be awarded 'AB' Grade.
- VI. Each appearance to SEE or absence from SEE shall be treated as an attempt.
- VII. A student shall not be permitted to avail course substitution option beyond a maximum of two (2) courses during the entire programme. This course substitution option is not permitted for core courses.
- VIII. Students with satisfactory CIE and attendance in a course/s absent for SEE ('AB' grade) or appeared to SEE, but failed ('F' grade) in SEE, **need not re-register for course/s but can register and appear for SEE directly,**



whenever the next SEE is held for that course in Odd/Even semester end.

- IX. Courses with 'DX' Grades shall be registered again in subsequent Odd/Even Semester, when offered.

4.2D. INTERNSHIP / INDUSTRIAL TRAINING

The PG student shall undergo internship / industrial training for a duration of 6 weeks on full time basis after II semester final exams and before the commencement of III semester. The student must submit letters from the industry clearly specifying his / her name and the duration of the internship on the company letter head with authorized signature. Internship must be related to the field of specialization of the respective PG programme in which the student has enrolled.

4.2 E. MINOR & MAJOR PROJECT WORK

- 1) Before uploading the dissertation report of the major project, the guide shall ensure that the plagiarism check is done and obtain the certificate. The percentage of plagiarism must be < 10%. In case, the percentage of plagiarism is > 10% the guide shall reject the report and inform the candidate to make necessary corrections and resubmit the same.
- 2) The candidate shall submit a soft copy of the major project work in the form of a CD which should contain the entire work in both Word and PDF format. Guides after checking the report for completeness as per the format and content, shall upload the report along with the plagiarism report (<20%). The guide shall choose and submit a panel of 3 external subject experts for evaluation of the dissertation through SAP.
- 3) The guide and the examiners shall independently evaluate and submit the marks in the prescribed format to the controller of examination. The average of the marks awarded by the two examiners shall be the final evaluation marks for the thesis. (A)
- 4) If the thesis is rejected by the first external examiner the report shall be sent to a second examiner appointed by the panel. If the second examiner also does not approve the dissertation report, the candidate has to carry out the project work once again and shall submit the dissertation report within 8 weeks, in such cases of rejection the candidate shall redo the entire submission of dissertation in softcopy after plagiarism check.
- 5) The candidate may also choose another topic of dissertation under a new guide, if necessary, in such an event the dissertation report shall be submitted within 4 years from the date of admission to the program.
- 6) If the dissertation report is approved and evaluated by both the examiners and the candidate secures minimum passing marks in the evaluation the controller of examination shall inform both the examiners to conduct the viva-voce exam and to submit the viva-voce marks.
- 7) The internal examiner as per the direction of the CoE shall arrive at a convenient date to conduct the viva-voce examination of the candidate in consultation with the external examiner with information to the controller of



examination.

- 8) The weightage for the evaluation of the project and the performance at the viva-voce shall be as per the scheme specified in the syllabus book. The marks awarded jointly by the examiners (B) after the viva-voce examination shall be sent to controller of examination immediately in a sealed cover
- 9) The date of submission of dissertation report may be extended to a maximum of 4 academic years from the date of admission to the first semester M.Tech /MCA program
- 10) Final SEE assessment: $SEE = (A+B)/2$
- 11) Final Grading based on CIE+SEE

4.3 GRADING SYSTEM

Absolute Grading system on 10-point scale is followed in the evaluation of student's performance in a course.

- a) **LETTER GRADES:** Letter grade is basically a qualitative measure (an alphabet/letter) giving the performance of a student, based on the score. This is arrived at after the student's performance in a course, which includes **both CIE and SEE**.
- b) The range of marks for each letter grade shall be as given in the following Table 4.3.

Table 4.3 Grading System

Letter Grade and corresponding Grade Points on a typical 10 - Point scale							
Letter Grade	O	A+	A	B+	B	C	F
Grade Point	10	9	8	7	6	5	0
% of Marks secured	90-100	80-89	70-79	60-69	55-59	50-54	0-49

- c) **GRADE POINTS:** Depending on the letter grades assigned, a student earns certain grade points. In the 10-point grading system, the grade points earned for different letter grades are given in **Table 4.3**.
- d) Grade point averages SGPA and CGPA: The grade points earned for each course are used further for calculating semester grade point average (SGPA) and the cumulative grade point average (CGPA), both of which being important performance indices of the student.
- e) The SGPA and CGPA respectively facilitate the declaration of academic performance of a student at the end of the semester and the end of successive semesters respectively).
- (i) **SGPA** (Semester Grade Point Average) is the performance index of a student in a semester and is calculated as follows:



$$SGPA = \frac{\left[\sum (\text{CourseCredits}) \times (\text{GradePoint/s}) \text{ for all the courses registered by the student, excluding transitional grades, in that semester.} \right]}{\left[\sum (\text{CourseCredits}) \text{ for all the courses registered by the student excluding transitional grades, in that semester.} \right]}$$

(ii) **CGPA** (Cumulative Grade Point Average) is the performance index of a student of all the previous semesters and is calculated as follows:

$$CGPA = \frac{\left[\sum (\text{Course Credits}) \times (\text{Grade Point/s}) \text{ for all the courses registered by the students excluding F grades until that semester.} \right]}{\left[\sum (\text{Course Credits}) \text{ for all the courses registered by the student excluding F grades, in that semester.} \right]}$$

f) **Transitional Grades:** The transitional grades, such as 'T', 'W' and 'X' shall be awarded to a student in the following cases. These shall be converted into one or the other of the letter grades (**O-F**) after student completes his/ her course requirements, including examinations.

Grade 'T': Awarded to a student having satisfactory attendance at classes and meeting the passing standard at CIE in a course, but remained absent from SEE for valid and convincing reasons acceptable to the college, like

- (i) Severe illness or accidents, which disable him/her from attending SEE.
- (ii) A calamity in the family at the time of SEE, which required the student to be away from the college. The candidate or the parents should inform the incident to the Chief Superintendent of Examination before the commencement of particular examination. The documents related to the incident shall be submitted to the Controller of Examinations within a week's time from the date of that particular examination or last day of that particular even/ odd semester examination, whichever is earlier.
- (iii) Any other exigency which the Grading Advisory Committee thinks requires consideration, like a student representing the institution / state / university / nation in university / state / national / international level events / competition. In such cases, the student is required to take prior permission from Head of the institution with relevant documents. The student should also submit the proof of having attended the event / competition immediately after returning, without which the transitional grade will not be considered. IF the student does not submit the relevant documents that support the claim of the candidate to abstain from the examination if not submitted within the prescribed period, such applications are liable to be rejected for I grade. The grading advisory committee's decision regarding the awarding of the I grade is final.



GRADE 'W': Awarded to a student having satisfactory attendance at classes but withdrawing from that course before the prescribed date in a semester under the advice of counselor and HoD, forwarded to the Dean Academics for approval.

GRADE 'X': Awarded to a student having attendance ($\geq 85\%$) and CIE rating ($\geq 90\%$) in a course, but SEE performance observed to be 'F', which could result in an overall F grade in the course.

- g) **EARNING CREDIT:** A Student would be considered to have completed a course successfully and earned the credits, if he/she secures a letter grade other than DX, I, W, X or F in that course.

4.4 PASSING STANDARDS

- a) The Standard of passing in each course is given in the following Table 4.4

Table 4.4 Passing standards

	Cumulative Internal Evaluation (CIE)		Semester End Evaluation (SEE)		CIE & SEE (Aggregate)
Theory without Practice	= >50% in Quiz + test And = >50% in overall CIE		= > 40%		= > 50%
Theory with Practice	Theory	= >40% in Quiz + test And = >40% in overall CIE	Theory	= >40%	
	Practice	= >50% in Lab record +Test	Practice	= >50%	
	TOTAL	= >50%	TOTAL	= >50%	
Practice	= >50% in Lab record +Test		= >50%		

- b) **There shall be no re-examination for any course in the credit system** to take care of such students;

- (i) Who have absented themselves from attending CIE without any valid reason;
- (ii) Who have failed to meet the minimum passing standard prescribed for CIE;
- (iii) Who have been detained for shortage of attendance in any course work;
- (iv) Who have withdrawn (Grade W) from a course.

Such students shall be required to re-register for the course(s) and go through CIE and SEE again and obtain at least a minimum Grade E or better in each case. While such students shall have to re-register for the same course(s) if hard core, they can re-register for alternative course(s) from among the soft core or elective courses, as the case may be. The re-registration shall be possible only when the particular course is offered again either in a main (Odd/Even).



c) SUCCESSIVE FAILURES

If a student fails in an Elective Course (Grade F) to pass a course and does not earn the required credits prescribed for the course even after Four (4) attempts that course is deemed to be exempted for the student. Then the students may choose a course of his/her choice from the same pool of electives with the same credits as a substitution for the failed course. The selected course should not have been studied in the earlier semesters or to be studied in the higher semesters. Faculty advisor shall guide the student in this regard.

However, the student can choose to repeat the same course in which he/she failed. This provision is given for only two courses (one at a time) during the entire maximum duration of the programme.

The course substitution option is not applicable for core courses.

e) MAKE-UP EXAMINATION

i) The Makeup Examination facility is available to students who may have missed to attend the SEE of one or more courses in a semester for valid reasons and given the 'I' grade; Also, students having the 'X' grade shall also be eligible to take advantage of this facility. The makeup examination shall be held immediately after the announcement of SEE results as per dates notified in the Academic Calendar.

Appearing in makeup examinations for a course shall be treated as a second attempt excluding cases wherein a student has participated in national/international level events like Sports/NCC/NSS/RD Parade etc. with a prior approval from the Institution.

ii) Students claiming makeup examination on the above reasons are required to apply to the HoI, through the respective Department Head, before Attending the event, along with relevant documents issued by a competent Authority. In the event of death and/or serious illness/ accident of parent or guardian, the application should be supported by appropriate documents. The decision of the committee headed by the Principal of the institute shall be final. **No make-up examination will be applicable for Online MOOC Courses.**

4.5 SCHEDULE OF EXAMINATIONS

The Controller of Examinations will announce the schedule for the SEE, Makeup and Fast Track examinations. Examinations in an academic year are conducted in the following order:

1. SEE at the end of odd semester
2. Make-up examination after odd semester as per 4.4(c)
3. SEE at the end of even semester
4. Make-up examination after even semester
5. Supplementary exams during the ODD and EVEN semesters, along with regular SEE (Sl. No 1,3)

4.6 VERTICAL PROGRESSION (PROMOTION TO NEXT ACADEMIC YEAR)

- (a) Progression to 2nd Year (3d Semester)
- (b) Students having "F" grades for the courses totaling to more than 16 credits in the 1 and 2nd semesters of the first year of the programme shall not be permitted to move to the 3rd semester (2nd year) of the programme. These courses include



courses marked as 'DX' and 'AB'.

- (c) Promotion from an Odd semester to the subsequent Even semester shall not be restricted in both UG and PG programmes.
- (d) Vertical progression shall be as per VTU Regulations and notifications for respective programmes notified from time to time.

4.7 PAPER VIEWING PROCESS (PVP) applicable to all SEE except LAB examinations.

Paper Viewing Process (PVP) has been implemented for both UG and PG programs. After the provisional results are announced, the candidate can view his/her SEE answer scripts. The candidate shall register for PVP and during PVP he/she can give his/her grievance in writing in the prescribed format. Then the answer scripts evaluated once again based on the grievance of the student by an expert committee. Paper viewing process is final and this eliminates issue of Photostat copying of answer scripts, re-valuation and challenge valuation. After the evaluation the final grades are updated.

PVP INVOLVES THE FOLLOWING STEPS

STEP – I: REGISTRATION FOR PVP

The registration dates will be announced by the CoE office once the provisional results have been announced. For each course/s for which the student wishes to verify the answer script, the student needs to register for the course in the prescribed format.

STEP – II: SCHEDULE FOR PVP

The schedule to view the answer scripts will be announced and the student should be present personally to view the answer scripts. During this time, the student will be provided with a grievance form along with the evaluated answer script with marks awarded, scheme of valuation and solution. The students should provide the specific grievance question wise and only those grievances will be addressed.

STEP – III: VALUATION BY EXPERT TEAM

The grievance forms will be verified and each answer script applied for PVP will be evaluated by an expert team and if any change in the marks awarded is found, then better of the marks shall be considered for final grading. No negative evaluation in PVP.

4.8 MALPRACTICE

A student who is booked under malpractice will be prevented from writing that particular examination from the instant he/she is booked for malpractice (**Possession of manuscripts/printed material related or not related to the concerned course of exam; Possession and /or use of mobile phones or any other electronic gadgets, revealing identity in the answer scripts, destroying evidence of malpractice, impersonation, misbehavior, misconduct or any other malpractice related to examination**). The candidate shall be required to appear before the malpractice investigating committee. The day, date and time will be specified by the Chief Superintendent / Controller of Examination. If found guilty, depending on the severity of the case, the committee will impose an appropriate punishment as per the Examination Regulations and Guidelines. In such cases, the said course will be awarded with a credit of '0' (Zero) with the grade 'MP' for the calculation of SGPA.



4.9 REJECTION OF RESULTS

A student is permitted to reject the results of an entire semester (including CIE) **only once during the program duration**. The student, who desires to reject the performance, shall reject performance in all the courses of the semester, irrespective of whether he/she has passed or failed in the courses. Such a student is allowed to take re-admission for the relevant semester. Such a student will have to represent to the Principal in writing with the concurrence of the parent. Rejection of the result is not permitted to the students who have grade 'MP' in the respective semester until the compliance of penalty and punishment is cleared.

However, rejection of Second year Internship and Project work is not permitted.

4.10 GRADE CARDS

Each student will be issued a grade card at the end of odd and even semester as well as fast track examinations. This will have a list of all the courses registered by the student for the examination together with their credits, the letter grades and grade points awarded. Only those courses registered for credit and having grade points shall be included in the computation of the student's performance like SGPA and CGPA and the audit courses will not form part of this computation. The result of mandatory courses, which are of the noncredit type, will also be reflected in the grade card with appropriate letter grades. It may be noted that each student shall have to obtain at least **grade P or higher** (pass grade) **in each mandatory course to qualify for the award of degree by the university**.

4.11 PERCENTAGE EQUIVALENCE OF GRADE POINTS (ON 10 POINT SCALE)

The Equivalence of CGPA with the percentage of marks to be considered for equivalence in the conventional system for students coming from VTU colleges to autonomous colleges is as follows:

Conversion of CGPA in to percentage of marks and class equivalence, there is no formula for the conversion of CGPA into the percentage of marks. However, the following table may be referred for the conversion of the CGPA on 10-point scale into the percentage of marks for employment / higher studies, etc.

Percentage = CGPA x 10

Example: 8.54 (CGPA)*10 = 85.4%

Recommendations for Degree Award:

a) Eligibility for Passing and Award of Degree:

- A student who obtains any grade O to C shall be considered as passed and if a student secures F grade in any of the head of passing, he/she has to reappear in that head for the SEE.
 - A student shall be declared successful at the end of the Programme for the award of Degree only on obtaining CGPA 5.00, with none of the Courses remaining with F Grade.
- b) Each autonomous institution shall forward its recommendations to the university in respect of students qualifying for PG degree awards based on their success in the examinations / adjudication of theses as the case may be after receiving approval from the authorities / Bodies of the college concerned.
- c) The university reserves the right to withdraw a degree even though it has been



granted, should there be discovery that the work upon which it was based or the academic records in support of it had been falsified. In such a case the degree will be withdrawn promptly upon discovery of the falsification.

- d) Online courses: to be studied in online mode only. For F grade he /she can take any courses from bunch of the courses permitted by the respective BoS of the departments.

4.12 GRADUATION CEREMONY

- (a) The college will have its own annual Graduation ceremony for the award of Provisional Degree Certificates (PDC) to students, completing the prescribed academic requirements in each course of study.
- (b) The University will verify the list of students submitted by the college for award of degree and then confirms/accords approval for award of degree. Only after confirmation from the university the college can issue PDC and Transcripts to the students.
- (c) Prizes, Medals and Ranks to the meritorious graduating students will also be issued during the graduation ceremony.

(d) **Award of Class at Degree Level**

Master Degree in Technology shall be awarded to the candidates who have passed all the stipulated courses from 1st to 4th semesters. Declaration of the class for the degree shall be based on the performance of the candidate from 1st to 4th Semester taken together for students.

- 1. A candidate will be declared to have obtained **First Class with Distinction (FCD)** if the student has passed in all courses from 1 to 4th sem. and secured CGPA greater than or equal to **7.0 CGPA**.
- 2. A candidate who has passed in all the courses of 1st to 4th semesters securing **CGPA greater than or equal to 6 CGPA, but less than 7 CGPA** shall be declared to be eligible for the award of M.Tech / MCADegree in **First Class (FC)**.
- 3. A Candidate who has passed in all the courses of 1st to 4th semesters securing **CGPA greater than or equal to 5 CGPA, but less than 6 CGPA** shall be declared to be eligible for the award of shall be declared to be eligible for the award of M.Tech/MCA degree in **Second Class (SC)**.

4.12A Award of Ranks

- 1. **M.Tech** - Maximum of THREE ranks will be awarded in each M.Tech program provided the minimum number of students eligible to appear for the fourth semester SEE is FIVE. The rank shall be declared only for full time students who have passed all courses of every semester in the first attempt and on the basis of CGPA obtained.
- 2. **MCA** - TEN Ranks shall be awarded in the MCA program or 10% of the students appeared for examinations whichever less is. The rank shall be declared only for students based on aggregate CGPA obtained from 1st to 4th Semester in first attempt only.
- 3. Student appearing for Makeup / Summer Semester and any subsequent examinations in any credit or audit course/courses during the program shall



not be eligible for the award of ranks. The candidates who do not submit the dissertation report within the stipulated period are not eligible for consideration of rank.

4. Only students who complete the program in two consecutive years for M.Tech/MCA (regular students), are eligible for consideration for the award of ranks.
5. For the award of rank, CGPA shall be calculated from 1st to 4th semester
6. The basis for declaring the rank shall be the CGPA in the descending order of merit from the highest CGPA.
7. CGPA shall be calculated to the second decimal position.
8. Students with CGPA of ≥ 6 (Equivalent to First Class) or above are ONLY eligible for consideration for rank.
9. If two students get the same CGPA, the tie shall be resolved by considering the number of times a student has obtained higher SGPA, if it is not resolved even at this stage, the number of times student has obtained higher grades sequentially from 'O' to 'D' till the tie is resolved. If the tie is still unresolved, the students with similar CGPA will be awarded the same rank.

4.12 B. Provision to move to Integrated Ph.D program

- (a) The candidates pursuing M.Tech. Degree at the University and who have successfully completed the prescribed common coursework of the first three semesters of study with a minimum CGPA of 7.75 out of 10 or 70 % aggregate marks and published research papers in 'SCOPUS/SCI/WoS Indexed Journals /UGC-CARE Approved Journals' or obtained/filed patents shall be eligible for up-gradation to the Ph.D. Program, subject to approval by the Admissions Committee of the University.
- (b) Integrated Ph.D. program is a fulltime program.



5.0 VALUE ADDED COURSES & SERVICES

The institution will conduct proficiency courses from time to time depending on industry and skill requirements. A schedule of such courses shall be announced well in advance. Such courses shall be mandatory or otherwise depending on the importance of such courses. Separate certificates shall be awarded for such courses.

5.1 Finishing School

1. A student after getting placed may be required to undergo special training as prescribed by the employers as per the calendar of events that shall be announced from time to time.
2. A student who is not placed but wants to enhance his skills for employability can also opt for finishing school.
3. The curricula, fees (if any) and the courses of finishing school shall be announced by the Department of Placement and Training from time to time.

5.2 Professional Societies

Every student is advised to become a member of at least one of the Professional Societies which are active in the institution. They are required to actively participate in the Professional Society activities which will enhance their overall skills, organizational capabilities and leadership qualities apart from opportunity to network with experts from industries and R&D organizations.

1. IEEE Student Branch with Three societies
 - IEEE Communication Society
 - IEEE Power & Energy Society
 - IEEE Computer Society
2. International Society of Automation (ISA)
3. Computer Society of India (CSI)
4. Information Systems Audit and Control Association (ISACA)
5. Indian Institute of Chemical Engineers
6. Indian Concrete Institute (ICI)
7. American Society for Civil Engineers (ASCE)
8. Indian Institution of Industrial Engineers
9. Fluid Power Society of India (FPSI)
10. Indian Society for Heating, Refrigeration and Air Conditioning Engineers (ISHRAE)
11. Indian Society for Technical Education (ISTE)

5.3 Scholarship Facility

RV College of Engineering facilitates the scholarship to all eligible candidates under Government, corporate, NGO and Alumni scholarships schemes. Around 2000 students are benefited by the scholarship schemes to the tune of ₹ 5 crores.

Below are the various Government agencies, corporate & NGOs offering scholarships to our students.



Table 5.1 Scholarship Facility

Sl No	Government scholarships
01	SC/ST Scholarship
02	SC/ST Fee Concession (Free ship)
03	KEA 2010 Subsidy scholarships
04	MHRD (PU Board) (DBT)
05	Jharkhand State Tribal Co-Op Development Corp
06	BCM (OBC) Scholarship
07	Bihar / Samastipur OBC Scholarship
08	Karnataka Minorities Development Corp., Loan
09	K K Education / Alhaj Attar / Mamoor Welfare Trust
10	Dept Of Sainik Welfare For Ex Service Children
11	BBMP Mahanagara Palike/ Town / City Municipal
12	Merit Scholarship DTE Assam Gauwhati
13	N H F D C Faridabad
14	Merit Scholarship DTE Karnataka
15	Merit -Cum- Means (DBT)
16	Karnataka Employees Welfare Association
17	Nalanda / Samastipur Jilla Kalyan scholarship
Corporate Scholarships	
18	ABB JDF Foundation
19	Cognizant Foundation
20	Mercedes Benz Scholarship
21	Boeing
22	Kennametal Scholarship
23	Intel Scholarships
24	M/s Meritor- CVS India (P) Ltd
25	Sitram Jindal Scholarship
26	NTT Data Inc Scholarship
NGO Scholarships	
27	Arunodaya Scholarship for TE & ECE Students(Means)
28	Sarthaka Trust
29	Foundation for Excellence
30	Raghuvendra Singh Foundation
Alumni Scholarships	
31	Alumni Association of RVCE
32	Alumni 1979 Batch of E&C

Students can contact placement@rvce.edu.in for the further details and applications (Corporate Scholarship), Veda Murthy, Scholarship section for Government scholarship



5.4 LIBRARY & INFORMATION CENTRE:

5.4.1 NETWORKING & DIGITAL LIBRARY SERVICES:

The library is a consortia member of VTU for e-Resources, through which we are receiving the following e-Journal/ e-Books: IEEE Conference Proceedings, Springer Nature e-Journals / e-Books, Elsevier Science (Engg + CSE), e-Journals / e-Books, EBSCO Engineering Suite, ProQuest (Architecture and all Engineering and its Allied Branches Database), Emerald e- Journals/e-Books, Packt e- Books, New age e- Books and other mentioned below. Technology Platform: Knimbus – Remote Access; Drillbit Plagiarism Software.

These e- Journals can be accessed within the Campus through the link provided in the library page of website <https://rvce.edu.in/lib-journals> and at home Knimbus remote access. IEEE e- Books, Pearson e-Books, Wiley e-Books, Turnitin Anti-Plagiarism Software are Institutional subscribed resources, these can be accessed anywhere by using RVCE e-Mail ID and Password.

Library is also a member of DELNET and is also making use of the interlibrary loan facility provided by DELNET, for borrowing non-availability of books, manuscripts, and journal papers in the library, and sending required library books to DELNET on request.

Web OPAC: The availability of books in the main library and to check number of books borrowed by the reader can be accessed through any internet browser with the link <http://112.133.207.137/opac>. This can be accessed from college as well as home.

Online access: IP enabled online access facilities for e-books and journals have been provided for students and faculties throughout the campus and at home. Website <https://rvce.edu.in/lib-journals>.

Table 5.2 Library resources

Sl No	Journal Publisher	URL	No. of Journals
1	Elsevier - Science Direct (Engineering + Computer Science)	www.sciencedirect.com	327
2	Springer Nature (ME, CV, CS, EC and allied branches)	https://link.springer.com	689
3	IEEE Journals / Conference	https://ieeexplore.ieee.org	201
4	Emerald (Management) Journals	https://www.emeraldinsight.com	212
5	EBSCO Engineering Suite	https://search.ebscohost.co	6100
6	ProQuest (Architecture and all Engineering and its Allied Branches)	https://www.proquest.com	4492
Sl No	e-Books Publisher	URL	No. of e-Books
1	Packt (Professional)	https://prod.packtpub.com/in	5002
2	Elsevier Sd (Engineering)	https://www.sciencedirect.com	436
3	Emerald (Management)	https://www.emeraldinsight.com	436



4	New age International	https://digital.elib4u.com/	220
5	MINT e-Books	https://mintbook.com	1360
6	Cambridge University Press	https://www.cambridge.org/core/	58
7	BSP E-Books	https://ebookstore.bspublications.net	141
8	EDUPORT GLOBAL CBS E-BOOKS	https://eduport-global.com	174
9	EBSCO Engineering Suite Database (Engineering, Management, Architecture) E-Books	https://search.ebscohost.com	24015
10	Cengage Learning E-Books	https://cengageindiaelibrary.ipublish	69
11	Quiklrn E-Books	https://quiklrn.com/app.php	91
12	Quiklrn Language Communication Lab	https://home.quiklrn.com/englishlab/	
13	IEEE Blended E-Learning Platform: Selected Video Courses	https://blp.ieee.org	60 Videos
14	Springer Nature	https://link.springer.com	12863
15	Pearson e-Books (Institutional Subscription)	https://elibrary.in.pearson.com	494
16	Wiley e-Books (Institutional Subscription)	https://ebooks.wileyindia.com	387
17	IEEE e-Books (Institutional Subscription)	https://ieeexplore.ieee.org	1125
18	WORLD TECHNOLOGIES E-BOOKS (Institutional Subscription)	https://ebooks.wtbooks.org	257
Technology Platform			
1	Knimbus- Remote Access	https://rvceb.knimbus.com	
2	Drillbit (Plagiarism Software Online Tool)	https://www.drillbitplagiarismcheck.com	
3	Turnitin Anti- Plagiarism Software (Institutional Subscription)	www.turnitin.com	

5.4.2 CENTRAL LIBRARY:

Total number of Titles: 61905

Total number of Volumes: 189710

5.4.3 POLICY FOR ISSUE OF BOOKS AND OTHER LIBRARY RESOURCES:

- Each user is provided with a ID Card, Students should keep their ID card safely, so that no one else misuses it. In case loss of identity card, a duplicate will be issued only on payment of Rs.1000/-.
- Four books are issued for undergraduates and five for postgraduate students.
- Two additional Books are issued for SC/ST students.
- Students are permitted to borrow CDs along with books.
- Reference books are to be read within the library premises.
- Books are issued for a period of two weeks, with one renewal for next two weeks.
- For late return of books, late fee of Rs.1.00 per day is collected.
- Reservation policy is provided.
- In case of a student is leaving the institution on long leave, completed



course he/she should obtain a **“No due Clearance”** from the library by returning all the documents borrowed and paying other dues, If any.

5.4.4 WORKING HOURS OF LIBRARY

Monday to Friday: 09.00 am to 09.00 pm
Saturday: 09.00 am to 04:30 pm
Sunday: 09:00 am to 01.30 pm

5.4.5 DIGITAL LIBRARY FACILITY

The internet and e- resources accessibility is available at digital library, is open to all students from 9 am to 6 pm. The students are required to follow the instructions displayed at the library and digital library strictly in order to avoid withdrawal of these facilities for such students who violate any of the Rules.

Email ID: library@rvce.edu.in ; librarian@rvce.edu.in

5.5 PLACEMENT & TRAINING

About placement and Training Department:

- The Department presently coordinates with more than 300 leading organizations which recruit Engineers/Technocrats.
- The RVCE has all the required facilities for the conduction of the recruitment process such as seminar hall for company presentations, rooms for group discussion, conferencing and interviews.
- The Department is a nodal agency for providing inputs on career opportunities for higher studies.
- The Department also engages with the corporates to offer scholarship to students on merit cum means basis. The scholarship to the tune of Rs.0.70 Crores is instituted with approximately 130 beneficiaries.
- It provides platform for the students to interact with company executives in the form of HR conclave, Industry collaborate workshops, guest lectures by top corporate and top University faculty like MIT etc.
- Industry sponsored best student award, best teacher award, star award etc., is organized by Placement Department
- The Training Program which is being offered at the institutional level and being facilitated by the Department of Training & Placement and is aimed at orienting the students with life skills.

5.6 Hostel Facility

- (a) There are four BOYS Hostels in the campus catering to over 1200 inmates.
- (b) **There is one ladies hostel inside campus and another located near the college.**
- (c) All the hostels in the campus are equipped with modern kitchen equipment and solar heating facility.
- (d) Hostels are provided with Internet& common TV Room, Indoor Games facilities.
- (e) Boarders are part and parcel of the hostel blocks and mess Administration
- (f) **Boarders who excel in academics are given awards.**
- (g) **Boarders are encouraged to take part in NSS, NCC, Rotaract, Raag and Sports activities.**

**BOYS HOSTELS**

Warden	Prof. P. Nagaraju Associate Professor Dept. of Electronics and Telecommunication Engineering (O): 080 6818 8219 (M): 9916911720
Deputy Warden	Dr. A.H. Manjunatha Reddy Associate Professor Dept. of Biotechnology (O): 080 6818 8160 (M): 984457369

Name of the Hostel	Accommodation Details	No. of Rooms	Total Capacity
Sir M. Visveswaraya (Single occupancy)	Final Year UG & PG Students	254	254
Chamundi (Double occupancy)	First year UG Students	123	250
Cauvery (Double occupancy)	2 nd and 3 rd Year UG and PG Students	352	704
Krishna (Double occupancy)	First year UG Students	74	148
Krishna Annex (Double occupancy)	First year UG Students	30	60

GIRLS HOSTEL EXECUTIVES

Warden	Dr. Padmaja K V Professor Electronics & Instrumentation Engineering (O):080-68188166 (M): 9845016646
Deputy Warden	Dr. Sudha Kamath Head of the Department, Physics (O): 080-68182080, 080-68188232 (M): 9480404395

GIRLS HOSTELS

Name of the Hostel	Used by	No. of Rooms	Total Capacity	Contact No. of In-House Warden
Krishna Garden Hostel (Off Campus) (Double Sharing)	UG & PG Students	66	132	Ms. Chandrakala 9880223540
RVCE Girls DJ Hostel (On Campus) (Triple Sharing)	UG Students	95	295	Caretaker; Mrs. Dhanamma 8553425655

IMPORTANT NOTE

In case of violation of College / Hostel norms & rules and regulations, a student may be prevented from continuing in that semester and / or appearing for the semester examination depending on the outcome of the Disciplinary Action Committee report. Ignorance of any rule does not condone any misbehavior.



6.0. EXTRA CURRICULAR ACTIVITIES

All cultural activities in the college are conducted under the umbrella of CAT (Cultural Activity Team). The CAT has the following wing of student clubs of different types of cultural activities.

6.1 CULTURAL ACTIVITY TEAMS

(A) FOOTPRINTS (DANCE CLUB)

Footprints is a cultural dance organization from RVCE. It is a community of dancers with versatile dance culture and background. The team is mainly comprised of 3 divisions: The Western association: Enigma, The Eastern association: Dhritarang, The Classical association.



(B) ALAAP (MUSIC CLUB)

Alaap is the music club of RVCE. With about 60 musicians who are well versed with different genres. play quite a few genres like Carnatic classical, Hindustani classical, western classical, jazz, pop, rock and some metal.



(C) CARV (CIRCLE OF ACTING AT RV)

Circle of Acting in RV, CARV promotes talent in dramatics and has been actively organizing events in the college such as Street Acts, Stage Competitions as well as put up various stage shows in Bangalore . They are divided into three strands on the basis of language ,

- a) CARV English
- b) CARV Hindi
- c) CARV Kannada



(D) RAAG (YOUTH CLUB OF RVCE)

The Youth Club of RVCE conducts various programs inculcating social awareness among students. It also conducts programs for skill development and literature.



(E) ROTARACT

Rotaract Club of R.V. College of Engineering is an institution based club in R.I. District -3190, sponsored by Rotary Bangalore South. The club takes pride in having a record of an annual 1000+ registrations every year and thus being the biggest Rotaract club in South East Asia and one of the largest in the world.

(F) QUIZ CORP



RVQC has evolved into one of the best known clubs in national quizzing circuits. Being one of the few quiz clubs in the country run entirely by students, we have created and nurtured many quizzers and quizmasters who are highly respected across the country.

(G) EVOKE (FASHION CLUB OF RVCE)

This is the fashion club of RVCE. They organize ramp walks and participate in many college fests in and outside of Bengaluru. They also perform for many fashion companies such as Pantaloons etc.

(H) DEBSOC



RVCE Debating Society is a high achieving society that participates in and organizes Parliamentary Debating Tournaments. Since its inception in 2003, RVCE Debating Society has been a society that has focused on excellence and inclusion. They train our juniors in the activity of Parliamentary Debating, providing them a worldview in several aspects beyond their academic skills. Through this society and the training, it provides, members significantly develop their public speaking skills and confidence. They diversify their viewpoints and move towards developing as individuals. As a society they have achieved several notable feats on a national and international level.

(I) PHOTOGRAPHY CLUB

This club plays a major role in capturing all of the college events, fests etc. They promote photography skills throughout the college and help organize various events.

(J) SATTVA (THE ART CLUB): A club to promote fine arts and crafts.



(K) KANNADA SANGHA: It provides an opportunity to non-Karnataka students to get an exposure to Karnataka's heritage and language, through Kannada programs.

6.2 INNOVATIVE TEAMS

Sl. No.	INNATIVE TEAMS
1	ASHWA RACING
2	TEAM VYOMA
3	TEAM CHIMERA
4	TEAM GARUDA
5	TEAM HELIOS
6	SOLAR CAR TEAM
7	PROJECT JATAYU
8	TEAM ASTRA
9	TEAM KRUSHI
10	TEAM ANTARIKSH
11	FREQUENCY CLUB
12	TEAM HYDRA
13	ENTREPRENEURSHIP DEVELOPMENT CELL
14	CODING CLUB

6.3 NATIONAL CADET CORP (NCC)



“Unity and Discipline” is the motto for NCC. In living up to its motto, NCC-RVCE strives to be the best force that is helping the youth to be groomed into dynamic and nation loving individuals. Time and again our cadets have proved the same by their participation in national level camps, winning medals and bringing laurels to Karnataka and Goa directorate and to the college. For all these achievements, our college was recognized as “Best NCC Institution Runners – 2017” “Best NCC Institution Winners – 2018” and “Overall Best NCC Institution – 2019, 2021-22” of Karnataka and Goa Directorate.

A total of 14 cadets have attended the prestigious Republic Day camp so far, 5 of the same during 2022. 5 have made it to the Thal Sainik camp and there stand numerous others, who have made NCC RVCE and the directorate proud by attending the Youth exchange programme and other major camps like advanced mountaineering, advanced leadership camps.

We also hold a significant record in the number of our cadets who have joined the armed forces to serve the nation.



Achievement and activities



5 Cadets represented NCC RVCE at Republic Day Parade 2022 as a part of the Karnataka & Goa directorate contingent. They took part in many events such as All India Guard of Honour, Flag Area Competition and Cultural.

CJUO Krithika D joined the armed forces through NCC Special Entry Scheme and is undergoing training at OTA, Chennai. SUO Madhan joined the armed forces through IMA CDS 151 entry and is undergoing training at IMA, Dehradun. Hasiru, the tree plantation drive by NCC RVCE, was launched on 12th June 2021 with the aim of planting at least 385 trees, in the honour of Padma Shri awardee Saalumarada Thimmakka.

Under the guidance of our principal, Dr. K N Subramanya, Senior Manager of Estate and Facilities RVCE, Retired Major Raghavendra C and Capt. Dr. Mahendra Kumar, ANO of NCC RVCE, and other faculty of RVCE, around 1500 people were successfully vaccinated

in one day. As many as 3 similar and exclusively free vaccination drives were organised by NCC RVCE to aid people belonging to all sectors of society during the outbreak of the covid-19 pandemic. Cadets from NCC RVCE have chosen a diverse array of careers like defence services, civil services and are all doing immensely great in their choices.

6.4 NATIONAL SERVICE SCHEME (NSS)

The National Service Scheme is a public service program under the Union Ministry of Youth Affairs and Sports. The Motto of NSS, "Not Me But You", reflects the essence of democratic living and upholds the need for self-less service. NSS helps the students develop appreciation to other person's point of view and also show consideration to other living beings.

NSS RVCE is very active and organises number of events every year. More than 200 volunteers are enrolled under NSS and provide their constant support day in and day out.

The Utsarga Marathon is a flagship event organized by NSS RVCE every year to spread the awareness of physical fitness and our social responsibility to all the participants and also the spectators of the run. The funds collected are channelled for under privileged children education, women empowerment activities and child welfare programs. As a part of the contribution towards rural upliftment, NSS RVCE organizes village visit programs. Volunteers get a chance to interact and empathize underprivileged people. Appropriate projects to transfer technology to these areas are taken up. Also, volunteers take part in numerous activities like government school rejuvenation, plantation drives and awareness drives.



Achievements of NSS RVCE:



- ❖ Received a Letter of Appreciation from the Bruhat Bengaluru Mahanagara Palike (BBMP) for collecting a total of 600 Kg of recyclable waste in and around RVCE for the event Plog Run 2022- A waste collection drive aimed to collect recyclable waste materials.
- ❖ Received a Letter of Appreciation from Campus to Community for School Bell event for working towards rejuvenation of Government Schools in Karnataka. Highest number of participants for teaching underprivileged and school dropout students during COVID 19 lockdown in Karnataka is from NSS-RVCE.
- ❖ Plantation Drive - planted over 250 saplings near the Sondekoppa Lake, Bengaluru was broadcasted in DD-Chandana and also published in the newspaper.

Photos:



PLOG run - 2022



RVCE NSS Team 2021-22



**Azadi ka Amrut Mahotsav -
Sakaala awareness - 2021**



Utsarg Marathon - 2020



7.0 DISCIPLINARY MEASURES

7.1 GENERAL DISCIPLINE

- a) The students will not assist or even associate himself / herself in any activities which disturbs or is likely to disturb the peace and smooth working of the institution.
- b) The tuition fee shall be paid by the student before or at the time of admission / registration in every academic year.
- c) The student shall follow all the rules and regulations laid down by the college authorities/management from time to time.
- d) Students will have to maintain regular attendance. In case of attendance less than 75% the student will not be allowed for the ensuing CIE tests. Cumulatively he should have over 85% attendance as mentioned earlier, to be eligible for the semester end exams. In case of any absence, they should have to provide appropriate proof (medical certificate /letter from parent etc.) and information, within three days of the absence to the department, the teacher concerned and the counselor.
- e) In case of planning to participate in any curricular (including paper presentation/competition), co-curricular and extra-curricular activities, prior permission has to be sought through proper channel. Further immediately within three days, on return from the event, should also provide the necessary proof to the counselor, the department, and the teacher concerned. Otherwise, they will not be considered for any attendance benefit and the certificate will not be considered for credits for the paper on Innovation and Social Skills.

RECOVERY OF LEGAL CHARGES AS APPLICABLE

The institution shall recover legal expenses incurred towards representing/defending such petition/suit before any court of law by making the Institution a party for their personal benefit (eg. Name change etc) and the parents /students shall abide by such reasonable condition and pay such amount which would be on actual.

7.2 ANTI-RAGGING RULES

- a) As per the orders of the Supreme Court, Govt. of India, UGC, AICTE, Govt. of Karnataka, VTU, "Ragging" is a Criminal Offence leading to Non-Bailable Imprisonment. Students should not indulge in ragging or support ragging directly or indirectly in whatsoever manner. Severe action will be initiated against those indulging in ragging or supporting ragging.
- b) Ragging means causing, inducing, compelling or forcing a student, whether by way of a practical joke or otherwise, to do any act which detracts from human dignity or violates his/her person or exposes him/her to ridicule or to forbear from doing any lawful act, by intimidating, wrong fully confining or injuring him or by using criminal force on him / her or by holding out to him / her any threat of such intimidation, wrongful restraint, wrongful



confinement, injury or the use of criminal force.

- c) Ragging Menace is a criminal offence and such of the students who involve in ragging will be rusticated from the college. Further, their University degree and conduct certificates will be embossed in BOLD letters with a statement that they indulged in ragging.
- d) Students indulging and/or encouraging ragging will not be eligible for placement services, hostel facility, air concession, railway concession, scholarships, passport/visa clearance etc.
- e) Photographs of students who have been involved in ragging shall be published in the notice board and also published in local newspapers.
- f) Enquiry committee's decision regarding the punishment is final.
- g) The offence of ragging is not only punishable under Section 116 of the Karnataka Education Act, 1983, but also under various provisions envisaged in Sections 109, 110, 111, 112, 113, 114, 115, 116, 302, 305, 306, 339, 340, 341, 342, 343, 344, 346, 347, 354, 359, 368, 448, 451 and 506 of the Indian Penal Code (IPC).

7.3 DRESS CODE

- a) Dress code is defined based on the need for safety, security, functionality and comfort.
- b) Students are required to wear decent outfits.
 - i. Girls are expected to wear Chudidars / Salwars and Kameez with sleeves. Jeans with decent tops with sleeves are allowed. No tight fitting clothing is permitted.
 - ii. Boys are expected to wear shirts and trousers. No tight fitting clothing is permitted.
 - iii. Displaying offensive and obscene slogans and icons on clothing is prohibited.
- c) Uniforms for Labs is white coats and for workshops steel grey uniform.
- d) Students who do not adhere to the dress code are liable to be rusticated from the institution.

7.4 MOBILE PHONE

- a) The **possession & use** of Mobile Phones by the students in the academic areas inside the campus is banned. However, for the convenience of the students the mobile lockers have been provided in every department. **The parents/ guardians are advised not to call to the students on the mobile phones from 9.00 AM to 5.00 PM. In case of emergency, please contact respective HoD or Counselor.**
- b) If a student is found conversing on mobile or in possession of a mobile phone in any of the academic areas, the mobile will be confiscated and fine of Rs.5000/- will be levied for violating the rule.

7.5 SECURITY ISSUES

- a) Wearing of identity card in such a way that it is clearly visible, is a must inside the campus for security reasons. Entry in to the campus without valid Identity card is strictly prohibited. The faculty and the security personnel have the authority to check the ID cards
- b) Motorcyclists must remove their helmets before entering the College campus.



- c) College Security Staff have the right to ask individuals to identify themselves. Action shall be initiated against those persons who refuse to identify themselves.
- d) The students are advised to park their vehicle in the designated parking areas.

7.6 SUPPORT SERVICES

- a) Photocopying Facilities
- b) Banking Facilities with ATM
- c) Post Office
- d) Stationery Stores
- e) Food Court (Two)
- f) Health Centre
- g) Pharmacy
- h) Meditation Centre

**ANNEXURE - I
KEY EXECUTIVES**

SL No.	Designation	Name	E-Mail ID
1.	Principal	Dr. Subramanya K N	principal@rvce.edu.in
2.	Vice principal	Dr. K S Geetha	viceprincipal@rvce.edu.in
3.	Dean Academics	Dr. M.V. Renukadevi	dean.academics@rvce.edu.in
4.	Dean Student Affairs	Dr. B M Sagar	dean.studentaffairs@rvce.edu.in
5.	Controller of Examination	Dr. V. Anantharama	coe@rvce.edu.in
6.	Facility Manager	Maj. Raghavendra C (Retd.)	seniormanager@rvce.edu.in
7.	Dean Placements & Training	Dr. Ranganath D	placement@rvce.edu.in
8.	Dean, Research & Development	Dr. M. Uttarakumari	dean.rnd@rvce.edu.in
9.	Dean (PG & Research) for Circuit Programs	Dr. K Sreelakshmi	dean.circuit@rvce.edu.in
10.	Dean (PG & Research) for Non-Circuit Programs	Dr. Radhakrishna	dean.noncircuit@rvce.edu.in
11.	Dean-CSE Cluster	Dr. Ramakanth Kumar P	dean.csecluster@rvce.edu.in
12.	Dean-Continuing Education and Skill Development	Dr. M. Krishna	dean.cesd@rvce.edu.in
13.	Dean-Global Partnerships	Dr. Nataraj J R	dean.gp@rvce.edu.in
14.	Warden, RVCE Boys Hostel	Prof. P. Nagaraju	rvce.bh@rvce.edu.in
15.	Deputy Warden, RVCE Boys Hostel	Dr. Manjunatha Reddy	rvce.bh@rvce.edu.in
16.	Warden, RVCE Girls Hostel	Dr. K.V.Padmaja	warden.rvgh@rvce.edu.in
17.	Deputy Warden, RVCE Girls Hostel	Dr. Sudha Kamath M K	warden.rvgh@rvce.edu.in
18.	Librarian	Dr. T.R.Sridevi	librarian@rvce.edu.in



HEADS OF THE DEPARTMENTS

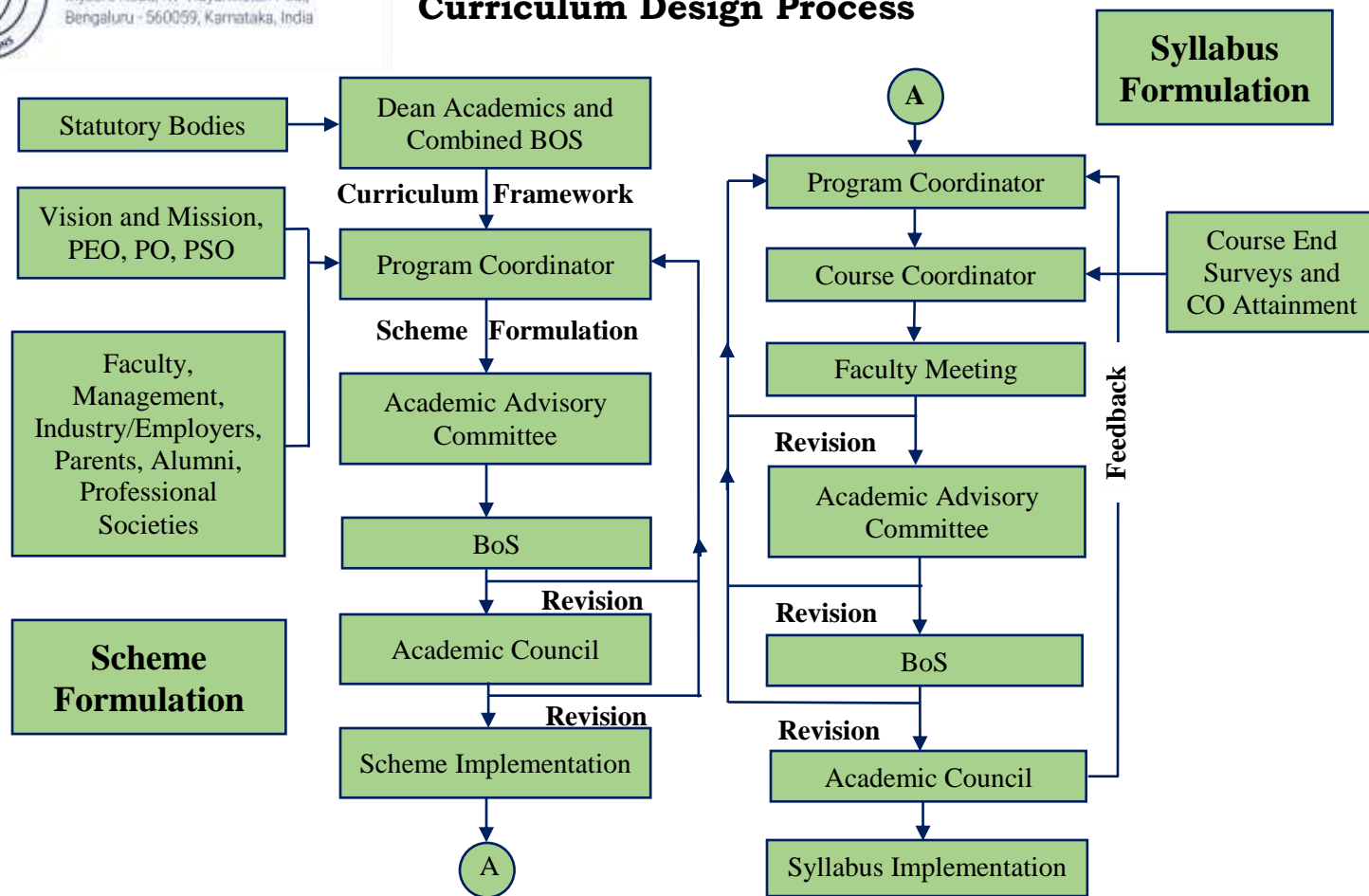
Sl No.	Department	Name	E-mail ID
1.	Aerospace Engineering	Dr. Supreeth R	hod.ae@rvce.edu.in
2.	Artificial Intelligence and Machine Learning	Dr. Sathish babu. B	hod.ai@rvce.edu.in
3.	Biotechnology	Dr. Nagashree N rao	hod.bt@rvce.edu.in
4.	Chemical Engineering	Dr. Jagadish H Patil	hod.ch@rvce.edu.in
5.	Civil Engineering	Dr. Anjaneyappa	hod_civil@rvce.edu.in
6.	Computer Science and Engineering	Dr. Shantha Rangaswamy	hod.cse@rvce.edu.in
7.	Electronics & Communication Engineering	Dr. Ravish Aradhya H V	hod.ec@rvce.edu.in
8.	Electrical & Electronics Engineering	Dr. Srivani S G	hod.ee@rvce.edu.in
9.	Electronics and Instrumentation	Dr. CH Renu madhavi	hod.it@rvce.edu.in
10.	Electronics & Telecommunication Engineering	Dr. Nagamani K	hod.tc@rvce.edu.in
11.	Industrial Management Engineering	Dr. Rajeswara Rao	hod.im@rvce.edu.in
12.	Information Science & Engineering	Dr. Mamatha G S	hodise@rvce.edu.in
13.	Mechanical Engineering	Dr. Shanmukha N	hod.me@rvce.edu.in
14.	Department of Chemistry	Dr. Mahesh R	hod.chemistry@rvce.edu.in
15.	Department of Mathematics	Dr. Jayalatha G	hod.maths@rvce.edu.in
16.	Department of Physics	Dr. Shireesha Golla	hod.physics@rvce.edu.in
17.	Director, Master of Computer Applications	Dr. Jasmine K S	director-mca@rvce.edu.in
18.	Program Coordinator (CSE-CY)	Dr. Minal Moharir	pc.csecy@rvce.edu.in
19.	Program Coordinator (CSE-DS)	Dr. Soumya A	pc.cseds@rvce.edu.in

**ASSOCIATE DEANS OF PG PROGRAMS**

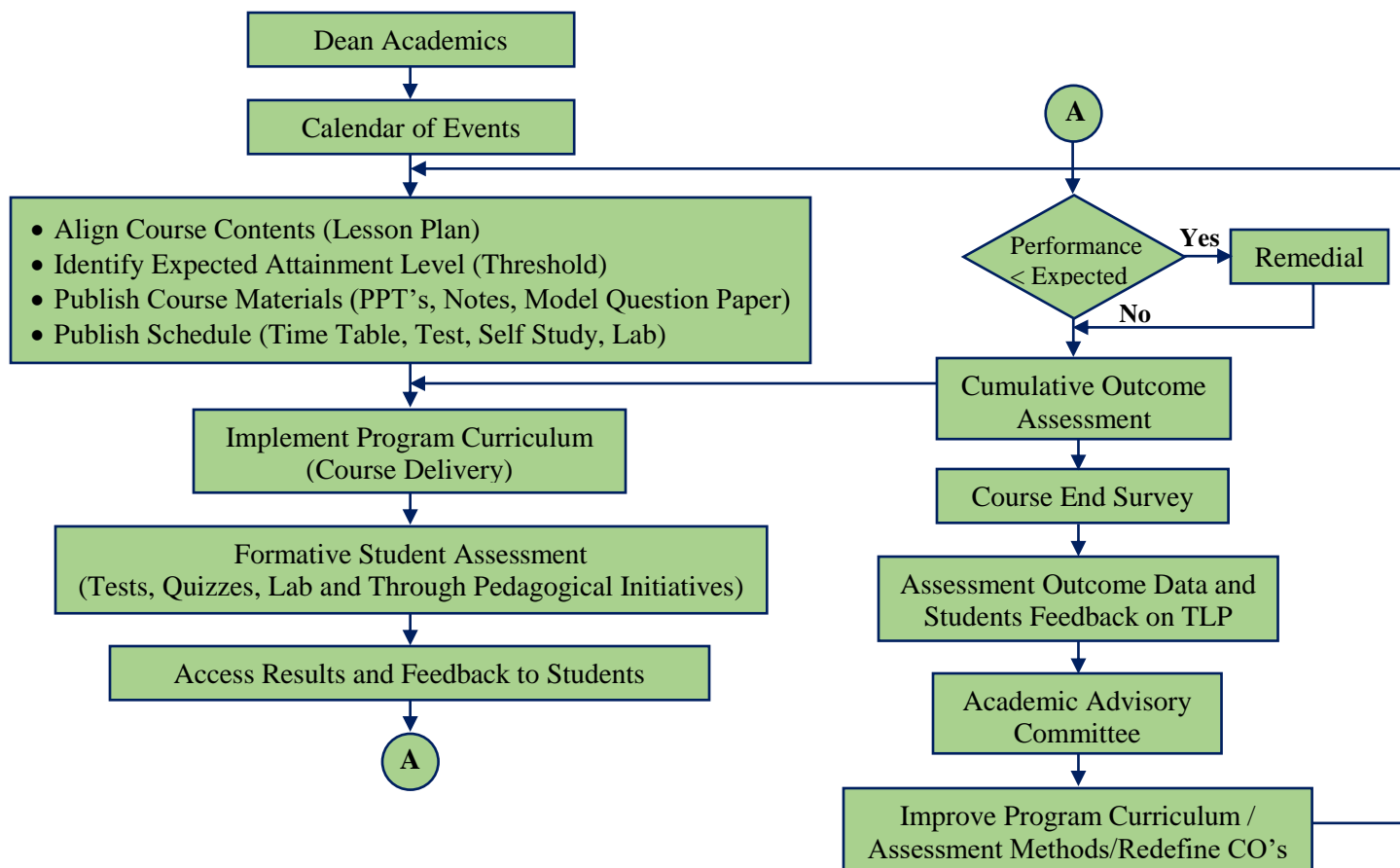
SL No	Department	Name	E-mail ID
1	BIOTECHNOLOGY	Dr. G Vijayakumar	adean.bt@rvce.edu.in
2	CIVIL ENGINEERING	Dr. T Raghavendra	adean.cv@rvce.edu.in
3	ELECTRONICS & COMMUNICATION ENGINEERING	Dr. Usha rani KR	adean.ec@rvce.edu.in
4	ELECTRICAL & ELECTRONICS ENGINEERING	Dr. M N Dinesh	adean.ee@rvce.edu.in
5	ELECTRONICS & TELECOMMUNICATION ENGINEERING	Dr. P Nagaraju	adean.tc@rvce.edu.in
6	INFORMATION SCIENCE & ENGINEERING	Dr. Padmashree T	adean.is@rvce.edu.in
7	MECHANICAL ENGINEERING	Dr. Ramesh S Sharma	adean.me@rvce.edu.in
8	Placement and training	Dr. Shilpa D R	adean.pnt1@rvce.edu.in
9	Placement and training	Dr. Ramaa A	adean.pnt2@rvce.edu.in
10	Cultural Activities	Dr. Rajalakshmi Mudibidre	adean.cat@rvce.edu.in



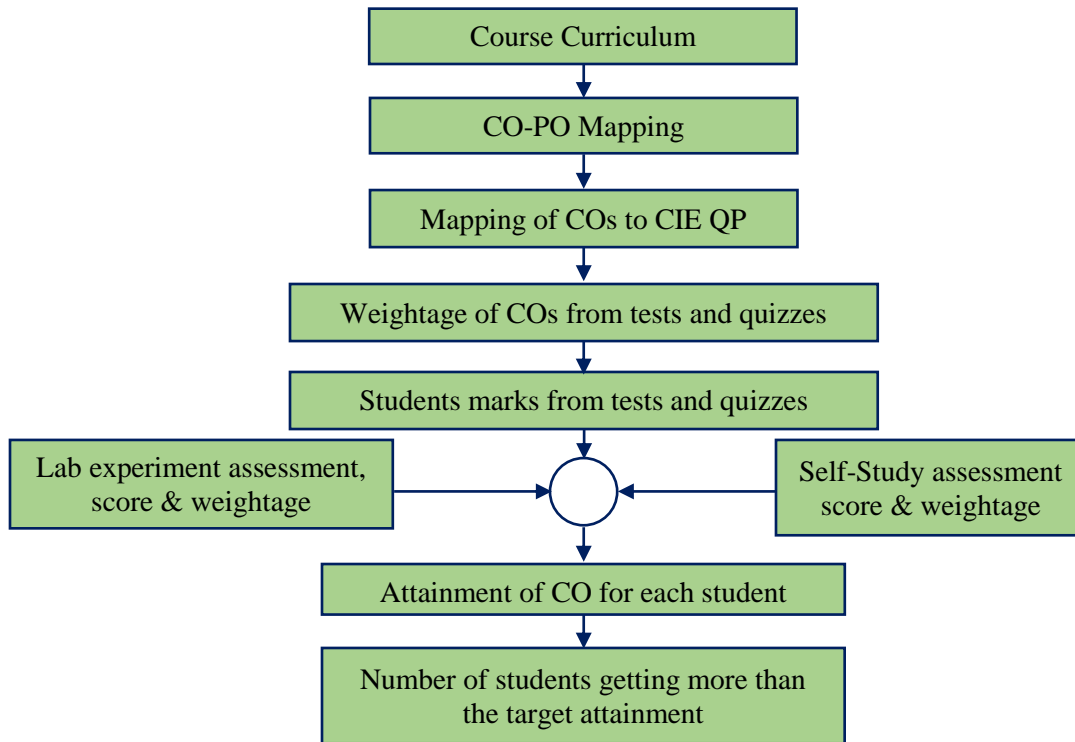
Curriculum Design Process



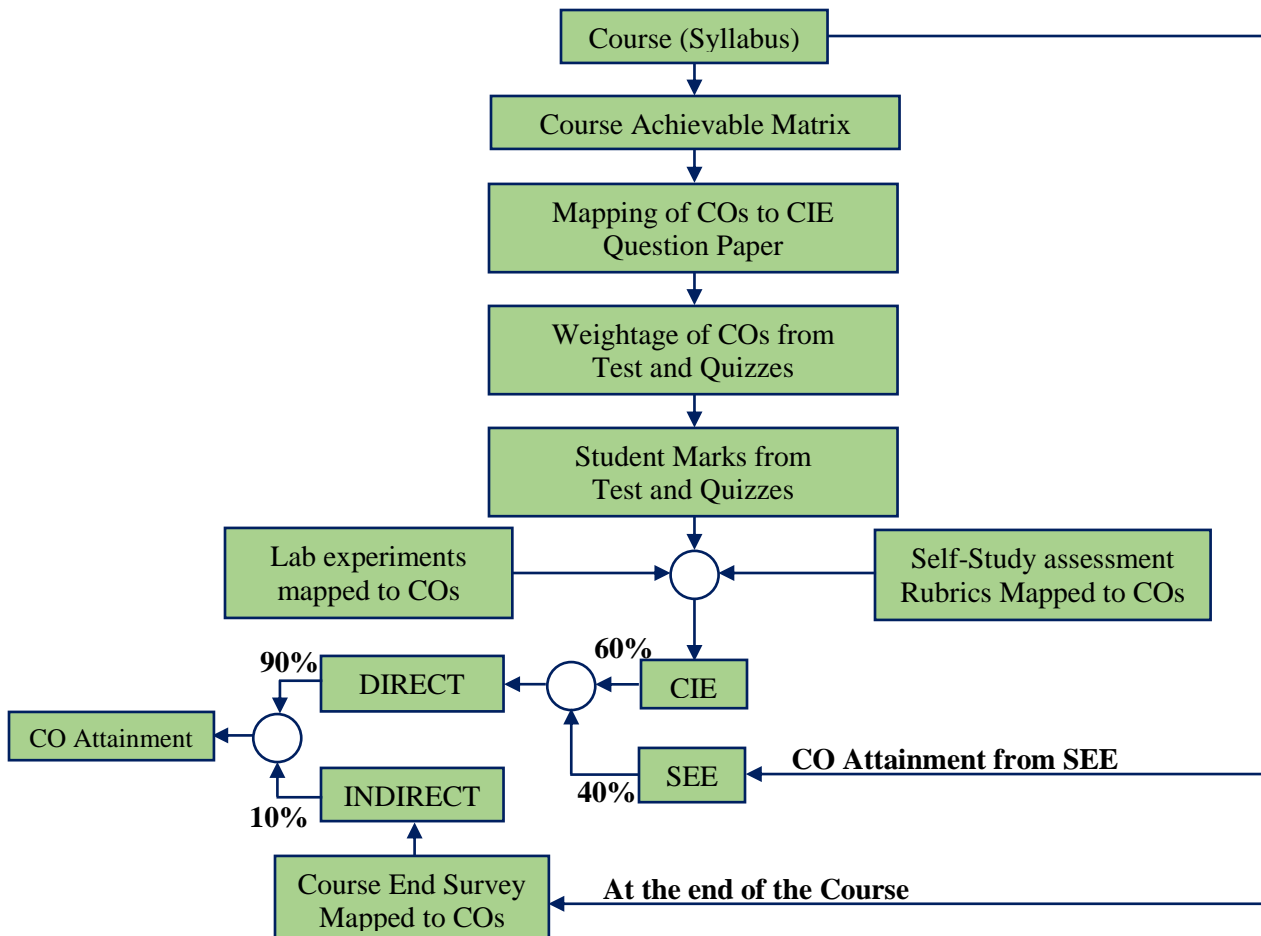
Academic Planning and Implementation



Process For Course Outcome Attainment

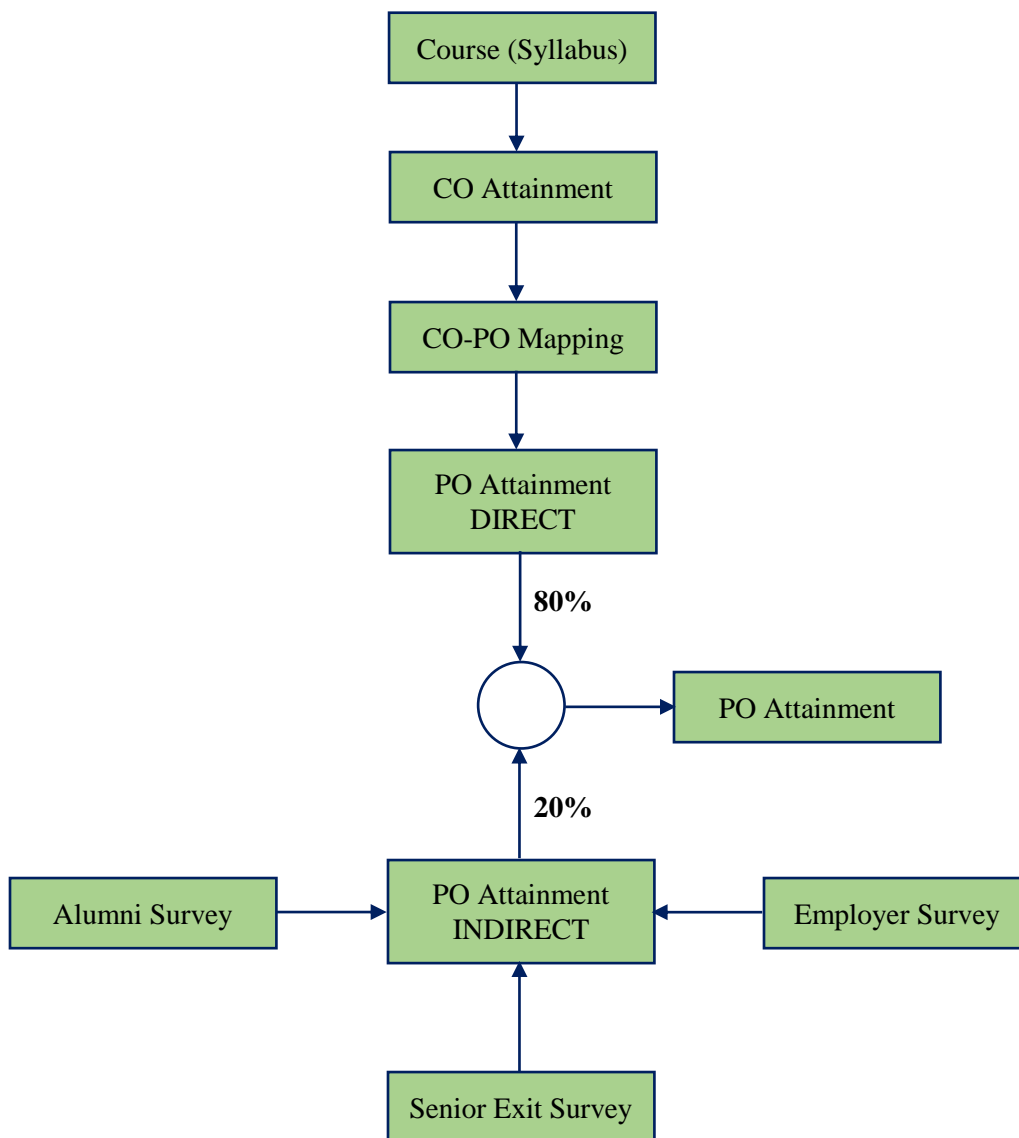


Final CO Attainment Process





Program Outcome Attainment Process





KNOWLEDGE & ATTITUDE PROFILE

- **WK1:** A systematic, theory-based understanding of the natural sciences applicable to the discipline and awareness of relevant social sciences.
- **WK2:** Conceptually-based mathematics, numerical analysis, data analysis, statistics and formal aspects of computer and information science to support detailed analysis and modelling applicable to the discipline.
- **WK3:** A systematic, theory-based formulation of engineering fundamentals required in the engineering discipline.
- **WK4:** Engineering specialist knowledge that provides theoretical frameworks and bodies of knowledge for the accepted practice areas in the engineering discipline; much is at the forefront of the discipline.
- **WK5:** Knowledge, including efficient resource use, environmental impacts, whole-life cost, re-use of resources, net zero carbon, and similar concepts, that supports engineering design and operations in a practice area.
- **WK6:** Knowledge of engineering practice (technology) in the practice areas in the engineering discipline.
- **WK7:** Knowledge of the role of engineering in society and identified issues in engineering practice in the discipline, such as the professional responsibility of an engineer to public safety and sustainable development.
- **WK8:** Engagement with selected knowledge in the current research literature of the discipline, awareness of the power of critical thinking and creative approaches to evaluate emerging issues.
- **WK9:** Ethics, inclusive behaviour and conduct. Knowledge of professional ethics, responsibilities, and norms of engineering practice. Awareness of the need for diversity by reason of ethnicity, gender, age, physical ability etc. with mutual understanding and respect, and of inclusive attitudes.

INNOVATIVE TEAMS OF RVCE

Ashwa Mobility Foundation (AMF): Designs and fabricates Formula-themed race cars and mobility solutions to address urban transportation issues.

Astra Robotics Team: Focuses on designing and building application-specific robots.

Coding Club: Helps students gain coding skills and succeed in competitions like GSoC and ACM-ICPC.

Entrepreneurship Development Cell (E-Cell): Promotes entrepreneurship through workshops, speaker sessions, and mentoring for startups.

Frequency Club Team: Works on software and hardware, emphasizing AI and Machine Learning.

Team Garuda: Develops a supermileage urban concept electric car and E-mobility products.

Team Jatayu: Builds low-cost UAVs with autonomous capabilities for various tasks.

Solar Car Team: Aims to create a solar electric vehicle for sustainable transportation.

Team Antariksh: Focuses on space technology and the development of operational rockets.

Team Chimera: Builds a Formula Electric Car through R&D in E-Mobility.

Helios Racing Team: Designs and tests All-Terrain Vehicles, participating in SAE's BAJA competitions.

Team Hydra: Develops autonomous underwater vehicles for tasks like water purification.

Team Krushi: Creates low-cost farming equipment to assist farmers in cultivation and harvesting.

Team Vyoma: Designs and tests radio-controlled aircraft and UAVs.

Team Dhruva: Engages in astronomy-related activities and collaborates on projects with organizations like ICTS and IIA.

Ham Club: Promotes Amateur Radio and explores technical innovations in communications, especially for disaster response.

Cultural Activity Teams

1. AALAP (Music club)
2. DEBSOC (Debating society)
3. CARV (Dramatics club)
4. FOOTPRINTS (Dance club)
5. QUIZCORP (Quizzing society)
6. ROTARACT (Social welfare club)
7. RAAG (Youth club)
8. EVOKE (Fashion team)
9. f/6.3 (Photography club)
10. CARV ACCESS (Film-making)



NSS of RVCE



NCC of RVCE



VISION

Leadership in Quality Technical Education, Interdisciplinary Research & Innovation, with a Focus on Sustainable and Inclusive Technology



MISSION

- To deliver outcome based Quality education, emphasizing on experiential learning with the state of the art infrastructure.
- To create a conducive environment for interdisciplinary research and innovation.
- To develop professionals through holistic education focusing on individual growth, discipline, integrity, ethics and social sensitivity.
- To nurture industry-institution collaboration leading to competency enhancement and entrepreneurship.
- To focus on technologies that are sustainable and inclusive, benefiting all sections of the society.



QUALITY POLICY

Achieving Excellence in Technical Education, Research and Consulting through an Outcome Based Curriculum focusing on Continuous Improvement and Innovation by Benchmarking against the global Best Practices.



CORE VALUES

Professionalism, Commitment, Integrity, Team Work, Innovation



RV College of
Engineering®

Mysore Road, RV Vidyaniketan Post,
Bengaluru - 560059, Karnataka, India | +91-80-68188110 | www.rvce.edu.in

Go, change the world®



Scan Here