



# CoE in Logistics & Supply Chain Management

## About CoE

The Centre of Excellence in Logistics & Supply Chain Management at RVCE is dedicated to carrying out specialized theoretical and applied research on Supply Chain and Logistics Management.

The vision of the center is to be an internationally recognized Centre for supply chain and logistics management dedicated to the creation and dissemination of new knowledge and a forum for networking with various industries, educational centers and other related entities.

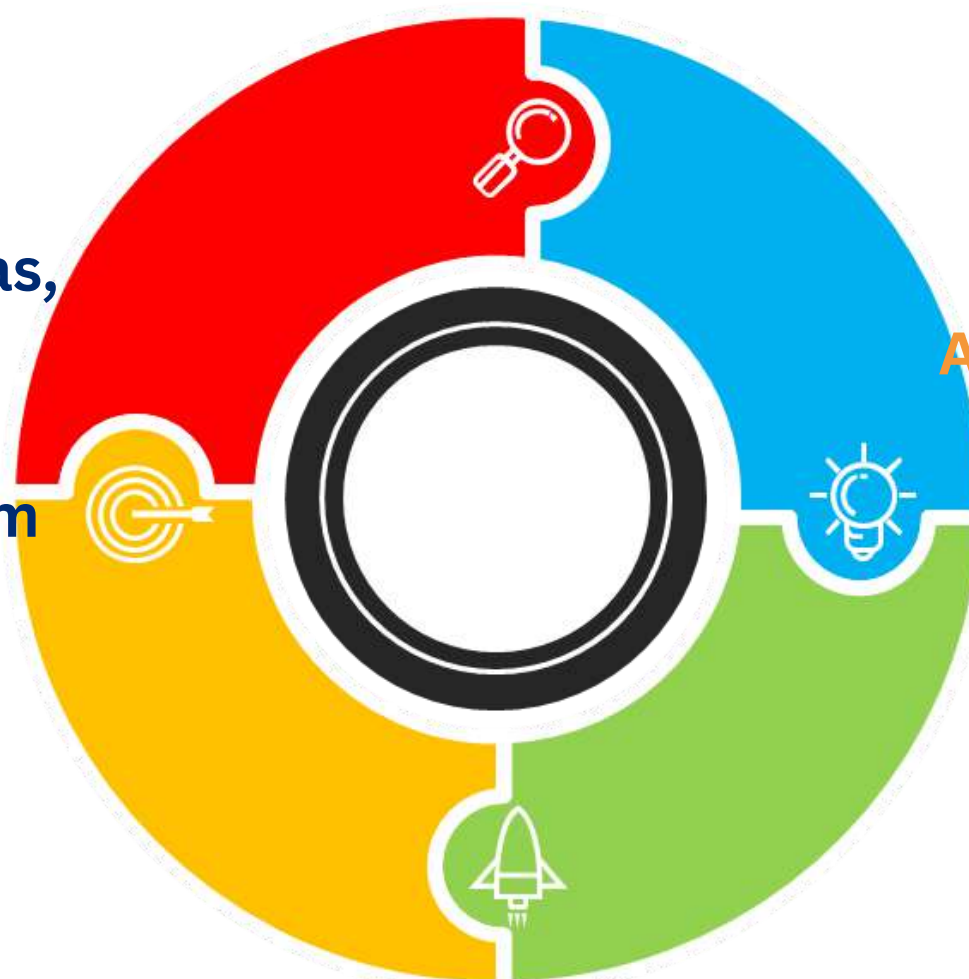
## Areas of Expertise

### Supply Chains

Manufacturing, Oil and Gas,  
Health care,  
Food processing,  
Public distribution system

### Circular Supply chains

e-waste management,  
recycling, reuse,  
sustainable economy



### Digital Technologies

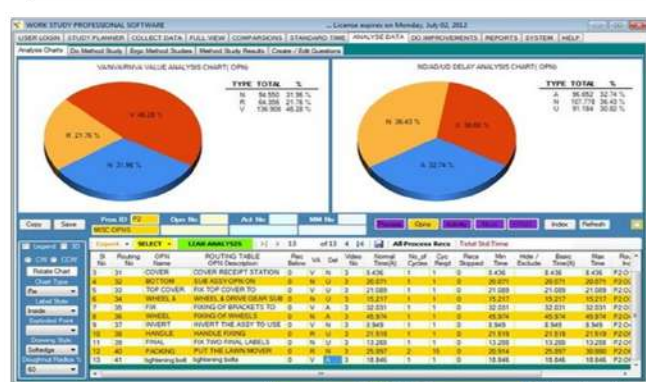
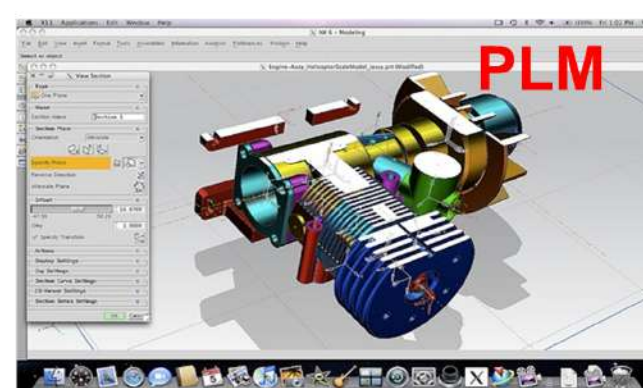
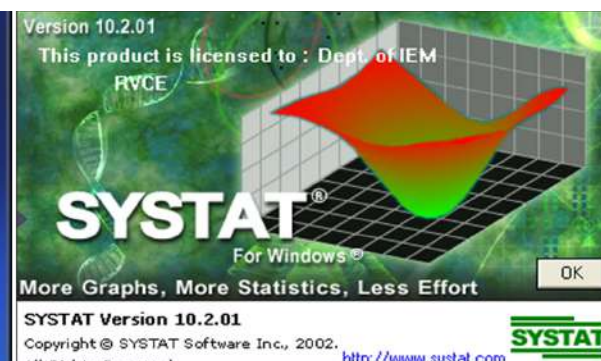
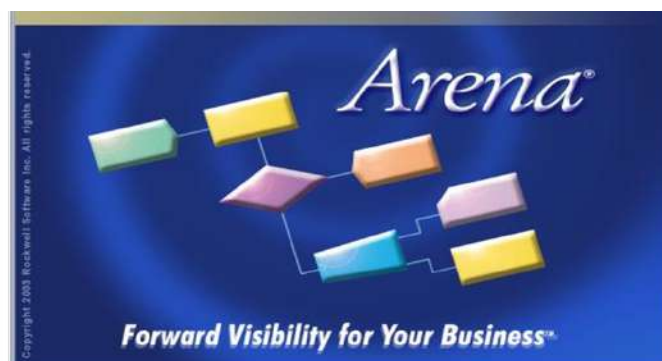
Block Chain,  
Digital twins  
Augmented Reality, Virtual Reality

### Futuristic Supply chains

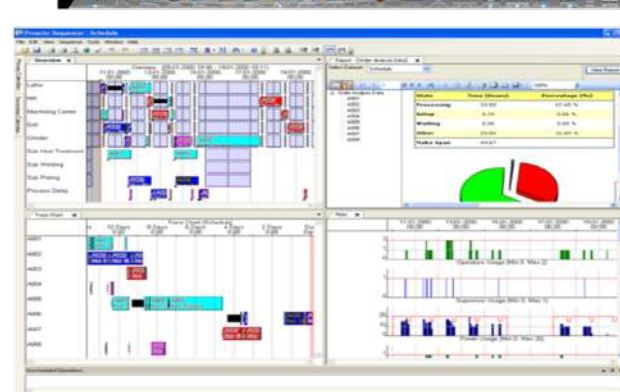
Omni Channel,  
Warehouse Automation,  
Lean Logistics,  
Elastic Logistics

## Facility & Infrastructure

The center is well equipped with trained faculty, computational infrastructure and softwares both open source and commercial



Workpro



Preactor

## Milestones

Training students and researchers in Digital Supply chain and logistics management



- Established in the year 2021,
- MoU signed with Secure Meters
- Conducted FDP for faculty under AICTE ATAL scheme



- Research and Consultancy projects  
Sanction received for a research project for Rs. 6 Lakhs under VTU RGS Scheme



- Internships  
Offering internships to UG, PG students in collaboration with Industry



- Paper Publication  
Papers published in reputed journals and conferences

## Activity & Research Collaboration

Joint Certification courses on Supply chain and Digital Supply chain (Duration - 3 months & 6 months) and Internships



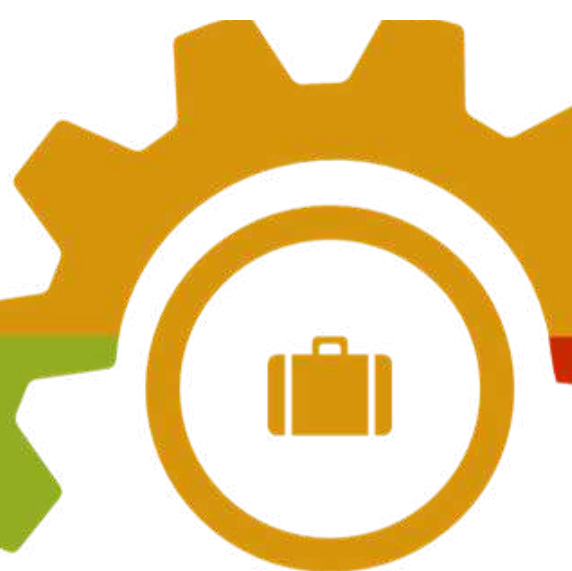
Collaborative paper publications

Applying for Joint research projects for various funding agencies



Specialized Executive Development Programs on SCM

Research on specific issues faced by companies by RVCE Faculty and students through project work



## Industry Partners



## Contact details

Dr. C K Nagendra Guptha  
Head of the Department

Department of Industrial Engineering and Management

Email: nagendragupta@rvce.edu.in

Contact: +91 9449612962